



IMPACT REPORT

2026







2	This Year, AMS...
3	A Letter to Our Community
4	AMS Member Stories
6	The Montessori Event 2026
12	Membership Highlights
16	AMS Accreditation
20	AMS Communications
22	Montessori Research and Innovation
26	Professional Development
28	AMS Events
30	Regional Action Commission
31	Montessori Public Policy Initiative
32	Teacher Education Action Commission
34	Expanding Our Reach: Positioning Montessori in Broader Conversations
38	AMS Living Legacy
39	AMS Recognition Awards
40	An AMS Scholarship Story
41	The Beth Holladay Endowment Fund
42	Financials
44	A Note of Thanks from the AMS Development Committee
45	Circle of Friends
46	Donors, Fiscal Year 2025
48	AMS Staff: Connected in Purpose
49	A Career Dedicated to Montessori Education: Marie Conti
50	Adult Learner Graduates
BC	Mission, Vision, Values/AMS Board of Directors

Content: July 1, 2025–June 30, 2026

Financials/Donors: July 1, 2024–June 30, 2025

This Year, AMS...

Completed year one of the **AMS 2030 Strategic Plan: Innovate. Inspire. Impact.**

Released **AMS Montessori School Management Guide** and **Reconstructing the Constructive Triangle**

Convened **6 U.S. regional events** and a **global conference in Hangzhou, China**

Delivered the **4th annual Labposium**, featuring **Suneel Gupta**

Established the **AMS Leadership Collective** with **49 AMS Ambassadors**

Advanced **national research** on **teacher recruitment** and **retention**

Revamped the **AMS Research Digest**

Expanded **global partnerships** and **international engagement**

Created the **Beth Holladay Endowment Fund** for teacher education scholarships

Elevated the **Montessori movement** through **storytelling, exhibits, and community experiences**

A LETTER TO OUR COMMUNITY

Dear AMS Community,

As we reflect on the past year, we are filled with gratitude and pride for our community and all we have built together.

The pages of this report represent a collective effort. They reflect the work of educators, school leaders, teacher educators, adult learners, researchers, volunteers, and partners around the world. Each initiative, program, and moment of impact exists because of your commitment to Montessori and to one another.

At its core, AMS is grounded in community. It is a community that shows up, grows together, and continues to believe in Montessori education as a force for human development and peace.

We extend our appreciation to our community, including staff, the Board of Directors, commissioners, committee members, content contributors, and volunteers. Your leadership, time, and care make this work possible. You are the foundation from which AMS continues to evolve and lead.

We also celebrate the many individuals who reached important milestones this year. From adult learners completing teacher education and earning AMS credentials to those engaging in certificate programs, fellowships, and professional learning, your commitment to growth strengthens the entire Montessori movement. These accomplishments matter and ripple outward into classrooms, schools, and communities across the globe.

This year also marks the completion of Year One of our 2030 Strategic Plan: Innovate. Inspire. Impact. Our focus in this first year was clear: to build a strong foundation. We invested in systems, strengthened our infrastructure, deepened our research and learning efforts, and clarified our organizational direction.

Much of this work is not always visible, but it is essential. Strong foundations allow us to grow with intention, scale with integrity, and ensure that Montessori remains a relevant, research-informed, and accessible model of education for generations to come.

As we look ahead, we do so with confidence because of you.

Your dedication, your practice, and your belief in this work shape AMS today and define what it will become tomorrow.

Thank you for being part of this community. Thank you for your trust. And thank you for continuing to move Montessori forward, together.

With appreciation and respect,

Munir Shivji
Executive Director

Anita Hanks
Board President



AMS MEMBER STORIES

My name is Xin Li.

I transitioned from software engineering to Montessori teaching, driven first by the birth of my son, and second after a striking realization: Montessori's approach aligns closely with the engineering philosophy of "research before action." In Montessori, we must understand the child before we can truly help them. This perspective fundamentally refreshed my understanding of education.

My Montessori journey began with the AMS Infant and Toddler program at the Shanghai Montessori Education Academy. There, I was inspired by instructors like Dr. Darla Miller and Shuzhen Sun. As a full-time mother, I chose to intern at home, setting up a Montessori environment for my son. My institute and consultants offered invaluable support during that time.

From 2019 to 2023, I worked as a lead teacher. For an engineer, this proved fascinating; I researched Montessori materials, modern child development theories, and classroom management, and felt deeply encouraged by AMS.

In 2023, I joined the AMS Emerging Leaders Fellowship Program. The program urged us to advocate for Montessori and taught me action research—a scientific, problem-solving approach I immediately loved. Setting my sights on becoming an instructor, I decided to pursue an Early Childhood credential. I chose AMS again for its research orientation and its nine-month internship, which allows new teachers authentic practice with the Montessori method. At the Barrie Institute for Advanced Montessori Studies, my knowledge expanded profoundly. Today, I am interning at the Montessori School of Northern Virginia.

Through my Montessori journey, I have transformed from a mere technician into a self-aware, reflective person. I am deeply grateful to AMS for the guidance, accompaniment, and support at every point along my path.

In Montessori, we must understand the child before we can truly help them. This perspective fundamentally refreshed my understanding of education.

Xin Li
Intern,
Montessori School
of Northern Virginia



Crowley Montessori Academy



Robert Gillies,
Principal

Crowley Montessori Academy (CMA) is a public, open-enrollment Montessori school in Crowley, TX (and is the state's only public Verified School). It opened in 2019, and serves 3-year-olds through 6th graders. Four of its classrooms are bilingual—language and cultural studies are taught in Spanish, and math is taught in English. Of CMA's 18 lead teachers, 12 are Montessori-credentialed, while the other 6 are in their practicum year. The teachers are deeply invested in their own preparation, transformation, and desire to deepen their knowledge and skill. Each teaching team gathers weekly to present a "micro teach," in which seasoned and new Montessori teachers learn and discover new approaches together. The staff is supported by principal Robert Gillies, who is committed to academic rigor and excellence in state assessment, and also strives to nurture and preserve the less-quantifiable pieces of Montessori pedagogy.

This year, CMA is working with Dr. Gulzar Babool and Shelton Montessori Training to design professional development around a central question: How can we create extensions to the materials to add depth, rigor, and complexity?

When Principal Gillies is asked what he is most proud of, he names teachers, children, and parents. He praises educators who have increased their knowledge of Montessori praxis and their ability to meet students' needs. He mentions the difficulty of getting everything figured out in the first years of a new school, but notes how important it is to get the key pieces in place—namely high-quality teacher training—in order to stay committed to the school's mission of making a high-fidelity Montessori program available to children and families.

2026

THE MONTESSORI EVENT

Washington, D.C. | March 19–22

The Montessori Event 2026 brought together more than 4,000 Montessori educators from around the world. Together, we deepened our practice, strengthened our global community, and aligned our work with the evolving needs of children and society.

Opening Ceremony

Nine-year-old Montessori students **Ishaan** and **Ayaan Shivji** kicked off the program with a charming, heartfelt welcome.



Munir Shivji focused his remarks on the responsibility and transformation of the prepared adult, and welcomed **Michelle Kang**, CEO of the National Association for the Education of Young Children (NAEYC).



4

Days of Extensive Programming

175+

Sessions

300+

Speakers

120

Exhibitors

12

Countries Represented

Keynotes

This year's keynote speakers challenged and inspired the community to think expansively about education, leadership, and human potential.

Together, these voices elevated the conversation, bridging science, storytelling, and practice to inspire a deeper commitment to transforming the adult in the service of the child.

Clockwise from top left:

Dr. Lisa Damour grounded the community in the science of well-being, and reframed stress and anxiety as essential parts of growth.

Clint Pulver delivered an energizing call to action, reminding educators of the profound impact of relationships and the power of a single moment to transform a life.

Michele Norris offered a reflective and timely perspective on communication, storytelling, and connection through letter-writing.

Jason Silva, a Montessori alumnus, introduced awe and wonder as catalysts for learning.



THE MONTESSORI EVENT

Montessori Voices

Montessori Voices continues to be a powerful and human-centered experience, elevating authentic stories from across our global community.

Right:

Ola Elserwi reflected on her transition from pharmacist to Montessorian, and illustrated how geometry and cultural connections can inspire creativity and unity across learning environments.

Inset:

Caroline Robbins shared her personal and professional evolution from perfectionism to self-compassion, highlighting the importance of supporting adults in Montessori environments.



Left:

Meher Van Groenou, AMS 2026 Living Legacy, spoke about her global Montessori journey, and encouraged attendees to find the courage to walk into the unknown.

Right:

Tejal Mehta offered a multi-generational story of Montessori, from her childhood in India to her work as an educator and parent.





India Exhibit Experience

The immersive exhibit “Maria Montessori in India: A Decade of Discovery (1939–1949)” transported attendees into a pivotal chapter of Montessori’s life and work, exploring how Montessori’s time in India shaped her thinking around cosmic education, peace, and human development.

InFocus Deep Dives

These targeted, level-specific sessions explored critical topics in Montessori practice with greater depth and application, creating space for focused learning, dialogue, and practical strategies aligned to each stage of development:

- Infant & Toddler (Windows of Opportunity: Honoring Sensitive Periods)
- Elementary (Igniting Imagination: Teaching Science through the Cosmic Curriculum)
- Secondary (Power, Participation & Voice in the Adolescent Environment and Practical Tools, Strategies, and Structures for Empowering Student Voice).

Maria Montessori Film Screening

A glamorous red carpet set the stage for a Saturday-night screening of the film *Maria Montessori (La Nouvelle Femme)*, a French-Italian historical drama written and directed by Léa Todorov.

Championing Montessori in Public Schools Initiative (CMPSI)

The CMPSI sessions highlighted the growth and impact of Montessori in public education, built cross-sector alignment (strengthening a shared understanding of literacy and instructional practice), and established a clear foundation for sustained collaboration and long-term transformation.

THE MONTESSORI EVENT

Research Matters

Through presentations, posters, publications, and collaborative networking, research came to life as a dynamic, community-driven process that connected evidence directly to practice, and transformed insights into actionable tools and partnerships that will drive innovation and shape the future of learning for children worldwide.

Coaching Corners

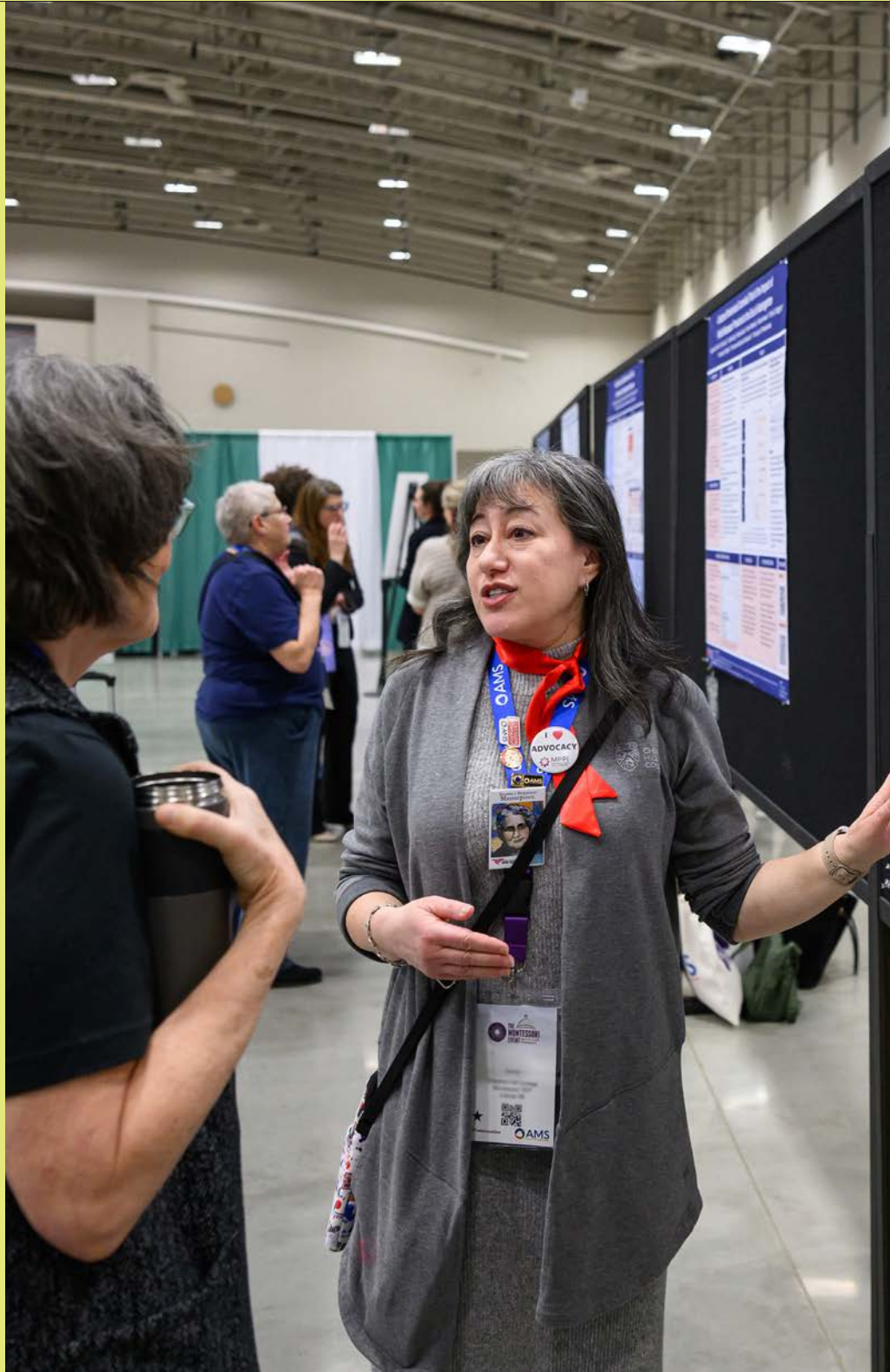
The Coaching Corners offered personalized, one-on-one support for leaders and educators in a supportive, judgment-free space, grounded in the belief that caring for ourselves enables us to better care for others.

Spotlights

Spotlight Sessions conversations created moments of inspiration and forward-thinking dialogue to shape the future of Montessori, from research and policy to classroom innovation and leadership development.

Teacher Educators Day

This daylong professional development experience, designed exclusively for TEP directors, administrators, and faculty, provided a unique space to engage in in-depth discussions, become informed on the latest advancements in Montessori teacher education, and cultivate a vibrant, supportive community. Attendees dove deep into the critical aspects of Montessori methodology, with a focus on equitable assessments. Dr. Kevin Gannon, author of *Radical Hope: A Teaching Manifesto*, presented on “It’s Not What You Got, But What You Give: (Re)thinking Equitable Assessment.”





From the Classroom to Capitol Hill

More than 70 Montessori advocates took part in a morning of policy and advocacy professional development, organized by the Montessori Public Policy Initiative (MPPI), then headed to Capitol Hill to meet with federal legislators. They shared the value of Montessori education and elevated the policy needs and priorities of our community.

While much of K-12 and early care and education policy is determined at the state level, federal legislation can play a critical role in shaping what ultimately happens in states. The Montessori advocates were exceptionally well-prepared, articulate, and unified in their message, leaving a strong and lasting impression. The momentum continues: many participants are already planning local advocacy efforts. To learn more or get involved with your state's advocacy group, visit the MPPI website at montessoriadvocacy.org, or see page 31.

Attendees at the United for Early Childhood luncheon, including AMS staff and board members

United for Early Childhood: Advancing the Field Together

At The Montessori Event, AMS proudly celebrated the centennial of the National Association for the Education of Young Children (NAEYC). For 100 years, NAEYC has stood as a pillar of advocacy, leadership, and dedication to young children and the professionals who serve them. Michelle Kang, CEO of NAEYC, joined Munir Shivji on stage during the opening ceremony, marking a moment of alignment and shared purpose between the two organizations.

Later, a luncheon brought together leaders from across the early childhood and policy landscape, including the Council for Professional Recognition, The Aspen Institute, ZERO TO THREE, First Five Years Fund, National Children's Museum, The Brookings Institution, and the District of Columbia Association for the Education of Young Children—to deepen relationships and align efforts.



Looking Ahead

The future of Montessori depends on the continued growth of the adult. As a global community, AMS is moving forward with new ideas and renewed purpose. Join us next year in Chicago, IL for The Montessori Event 2027.

SAVE YOUR SPOT HERE!



MEMBERSHIP HIGHLIGHTS

This year, AMS continued to evolve membership into more of a connected professional ecosystem, creating more ways for members to **engage, learn, lead, and connect.**

Engage

From connection to contribution

Community Engagement and Action Committee (CEAC)

Expanded pathways for members to take action through subcommittees focused on advocacy, humanitarian work, environmental justice, and school-centered projects

CEAC MEMBERS:

Kirsten Goode,
Chair
Aurora Costache
Cassi Mackey
Cathy Durand-Horne,
DEIB Consultant/Secretary

Emma Johnston
Lorna Cohen,
School Projects Chair
Michelle Morrison,
Board Representative
Michelle Blake

Nikki Conyers,
Humanitarian Chair
Tiffanie Bockey
Tyler Bourcier,
Member Connections Chair

Affinity Groups

Created more space for members to connect around shared roles, identities, and interests, fostering dialogue and belonging across the AMS community



Learn more or join an
AMS Affinity Group

Learn

Accessible, relevant professional growth

AMS Learning

On-demand professional development with curated content supporting educators at every stage

School Leader Newsletter

Delivers timely, practical insights for heads of school navigating complex leadership challenges

Family Connection Newsletter

Supports schools in extending Montessori principles into the home and strengthening relationships with families

Members of the Community Engagement & Action Committee welcomed members of the AMS community to the Coffee and Connections networking sessions at The Montessori Event.



MEMBERSHIP HIGHLIGHTS



Lead & Connect

Strengthening leadership through community

AMS Heads of School Leadership Collective

The Leadership Collective successfully transitioned from its pilot year into its first full year of implementation, expanding both its reach and depth. A total of 49 ambassadors were trained to lead 39 cohorts, with several cohorts co-facilitated to strengthen collaboration and leadership capacity. Each month, cohorts engaged in structured dialogue grounded in the *AMS Montessori School Management Guide* (see page 21), exploring topics such as parent communication, teaching and learning, documenting and using results, admissions and enrollment, finance, operations and facilities, staffing and evaluation, and school governance.

The program's greatest strengths are the relationships formed between schools, the enthusiasm and commitment of ambassadors, and the development of monthly "kits" that guide meaningful discussion. We continue to work to strengthen awareness and engagement and bring schools into the network.

Heads of school gathered virtually and in person this year in a variety of ways including the New Heads of School Summit (photos above) and the Heads of School Leadership Collective.

Thank you to our Ambassadors!

Alica Johnson-Grafe
Amy Henderson
Aurora Costache
Benjamin Blair
Beverly Smith
Bhairavi
Chandramouli
Brenda Huth
Brenda Zellmer
Candice Holbrook
Catharine Calder
Deepa Shreekumar
Nair
Denise Touma
Diann Sanderson
Diane Nickerson
Emily Lund
Erin Rand
Hallie Goertner
Jennifer Carriger
Jennifer Iannaconi
Jayne Martin
Joan Rodriguez-
Grau Malone
John DeMarchi
Jovan Wells
Julie Bragdon
Kari Cafeo
Kerry Moran
Lauren Leonoff
Leah Bray
Leo Chunliang Zhou
Lynor Johnson
Maria Chaffin
Martha Teien
Mary Beth Ricks
Michelle Edwards
Michelle Ulgasan
Nahla Nasser
Nidhi Oberoi
Rachael Buresh
Robyn McCloud-
Springer
Robyn Stearne
Samantha Trice
Sara Motlagh
Sonali Patil
Sonya Hemmen
Stacey Meyer
Stacy Nivert
Sunita Pailoor
Tara Cavaliere
Tiffanie Bockey



AMS ACCREDITATION

The School Accreditation Commission

The School Accreditation Commission (SAC) encourages and facilitates continuous school improvement through the process of AMS school accreditation, by defining standards that promote and uphold the highest-quality implementation of the Montessori approach to include diverse, equitable, inclusive school environments as a guide for implementation within member schools.

SAC MEMBERS

Michelle Seyller (*Chair*)

Bettina Delgadillo

Bernie Evangelista

Cassi Mackey

Jennifer Nolan

Muriel Owens

Katrina Walk

Patti Wilczek

Stephanie Flanigan



ICAISA Accreditation

The International Council Advancing Independent School Accreditation (ICAISA) is a membership organization that supports accreditors of non-public and independent schools. AMS is currently a new member, and expects to be named a full ICAISA member in the latter part of 2026. This membership will be important for two reasons. First, it means AMS will be broadly recognized as a provider of quality accreditation services (and one of just a few internationally-recognized Montessori accreditors). Second, it will offer AMS a healthy accountability structure for third-party review, to hold our organization to similar standards of transparent review that we ask of our AMS-accredited schools and AMS-affiliated teacher education programs.

As a new member, AMS is in its first 2-year review cycle, which includes an extensive self-study and report, submitted to a review team comprising directors from respected accreditation agencies that are full ICAISA members. AMS has also facilitated constituency meetings between the ICAISA review team and the following groups within our community:

- Heads of accredited schools
- Team chairs for accreditation onsite visits
- Volunteer team members from visiting teams
- Representatives from the School Accreditation Commission
- Members of the AMS Board of Directors
- The AMS Accreditation team
- AMS Executive Director, Munir Shivji

AMS also facilitated the opportunity for ICAISA team members to observe an onsite visit to one of our AMS-accredited schools (Lamplighter Montessori School in Cordova, TN). The AMS Team Chair for that visit was SAC member Bettina Delgadillo, who shared this perspective:

The accreditation visit to Lamplighter Montessori School was made even more meaningful by the presence of ICAISA, who observed the work of the visiting team with grace, courtesy, and a genuine spirit of curiosity and respect. From the beginning, they showed sincere interest in the Montessori approach, especially in the way classrooms are observed with care and intention. They seemed both interested in and, at times, surprised by the openness with which observations were shared and the honesty of the professional conversations that followed.

The experience offered a valuable opportunity to spend time with fellow accreditors who are committed to this work. There was a clear sense of shared purpose in supporting schools on their path toward improvement. The exchange of perspectives and the opportunity to reflect together made the visit particularly meaningful for the entire team.

AMS ACCREDITATION

Congratulations!

AMS celebrates the schools that were verified, accredited, or became accreditation candidates:

VERIFIED

Acorn Montessori School
Cedar Valley Montessori School
Columbus Montessori Education Center
Discovery Garden Montessori School
Elderflower Montessori School
Escuela Montessori San Cristobal
Evergreen Montessori Academy
Foothills Montessori School
La Prima Montessori
Laramie Montessori School
Magnolia Montessori School
Montessori Haven
OKC Heartland Montessori School
Omni Montessori School
Pache Montessori
Parkside Community Montessori
Peninsula Montessori Academy at Getzville
Peninsula Montessori Academy at Newton
Plymouth-Canton Montessori School
Prime Time Montessori School
School of the Woods
Sea Pines Montessori Academy
Spokane Valley Montessori
Sterling Montessori Academy & Charter School
The New School Montessori Center
Veranda Montessori School

ACCREDITATION CANDIDATE

Endeavor Montessori School at Dunwoody
Ladybird Montessori School
Lake Hills Montessori – Bee Cave
Lake Hills Montessori Tulsa
Montessori House For Children and Elementary School
Quad City Montessori School
RiverRun Montessori
School in the Hills – River Place
School in the Hills – Steiner Ranch
STEAMspark Montessori Experience
The Children's House of Nashville
The Marlowe School, LLC
The Montessori Schools of Central Texas

ACCREDITED

Brixham Montessori Friends School
Classen Montessori School (initial)
Crescent Ridge Academy
Fort Smith Montessori School (initial)
Greensboro Montessori School
Mariposa Montessori School
Franklin Montessori School
Franklin Montessori Schools (MD)
Broad Branch Children's House
Fernwood Montessori School
White Flint Children's House
Montessori School of Fort Worth
Montessori School of Northampton
Princeton Montessori School
Shrewsbury Montessori School – Oak Street
Shrewsbury Montessori School – Prospect Street
The Montessori School
Wyoming Valley Montessori School

Thank You.

This work is not possible without the support of our volunteers.

Alica B. Johnson-Grafe
Alison Wells
Ambar Cipolloni
Amy Henderson
Amy M. Mackie-Barr
Amy Ricketts
Ayana Kai Crawford
Bernadette (Bernie) Evangelista
Bettina Delgadillo
Brenda Huth
Brette Rothfield
Brian Bednarek
Cailyn Lynn
Cedric Collins
Charis E. Sharp
Cheryl Marie LaCost
Cindi Stehr
Cindy D. Weiher
Claudia L. Alvarez
Cynthia L. Barraza
Debbie Kelley
Debra Pittman-Davis
Dena Saunders
Denise M. Rosenthal
Diana L. Rose
Douglas Dziedzic
E. McCrae Harrison
Elizabeth Jeanne Hinkel
Erin L. Gutierrez
Erin Rand
Eunyoung Chae
Florence Henderson
Florence Kramer
Frederic F. Catlin
Hannah Army
Heather Cormons

Helen Muffoletto
Hiral A. Desai
Ingrid C. Weland
Janette Henry
Jeffrey Groh
Jennifer L. Cattell
Jennifer Lynn Schoepf
Jennifer M. Nolan
Jill Bauer
Jill Nowacek
Jody A. Trimm
Joshua Oboler
Josie Hill
Jovan Wells
Judith S. Beyer
Karen Quiroz
Karl Scott Schlobohm
Kate Kim
Katherine Nguyen
Kathy Bowen
Kathy Heckert
Katie Gerds
Katrina Davis
Kerry Colleen Moran
Kristin Grant
Lara H. Kamowski
Lauren Anderson
Lauren Williams
Leslie Harrington
Linsey Pointdujour
Lynette Goss
Mandy Downs
Margaret Bischoff
Maria Rosado
Mariya Udud
Mark F. Meyer

Mary MacIntosh
Megan Fremming
Mercedes Dugan
Michael Thigpen
Michelle Blake
Monica Walsh
Nanci Lynn Guartofierro
Natalie C. Prestiano Newell
Natalie Caraway
Paige Kemp
Rachel A. McAlpine
Rebecca A. Little
Regina Chiang
Rhonda Lynn McKay
Robin Renea Padar
Samantha Campanella
Sara Motlagh
Sara Norton
Sarah Ann Kreinbrink
Sarah Boone
Selena M. Brosnan
Shanon Flowers
Shawn Viverretta-Diaz
Shelby Feldman
Sonali Patil
Stephanie Benitez
Susan L. Grasse
Usha Balakrishnan
Zakiya Aisha Lasley
Zulema De Leon

Interested in serving on a school accreditation team visit?
Contact accreditation@amshq.org.

AMS COMMUNICATIONS

Publications



Summer 2025

This issue reenvisioned Montessori's learning triangle as a tool for teacher reflection, delved into the benefits of lesson study, and explored how to combat misinformation.



Fall 2025

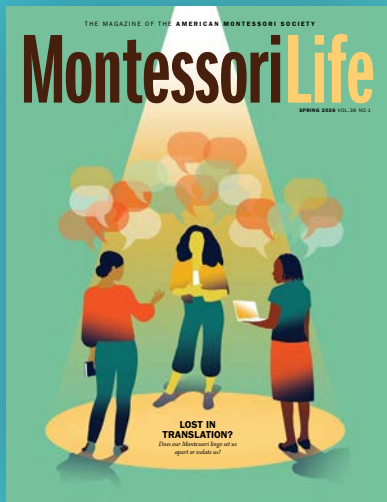
This issue took a deep dive into cosmic education, from its concepts and origins, to first-person accounts, to cosmic education in practice.



Winter 2025-2026

This issue presented the concept of time preference, offered an interview with AMS 2026 Living Legacy Meher Van Groenou, and discussed how teacher education practices can best accommodate adult learners.

AMS produces a variety of communications and publications to help better support its members. The *Montessori Life* magazine and blog both provide long-form thought pieces and insights for members. Our special publications are valuable resources to those in and outside of the classroom. Our podcast serves a broader audience and dives deeply into all aspects of education, making Montessori practices digestible for all. See more of our communication pieces on amshq.org.



Spring 2026

This issue explored how Montessori language can be used to unite or divide, looked at how food work in the classroom can support a sense of belonging, and examined equity-based assessments.



Montessori School Management Guide

This publication, written from the perspectives of 15 school leaders, offers strategies, thoughtful approaches, lessons learned, and a curated list of sample documents and AMS Learning resources designed to provide tools that both new and experienced leaders can use for reflection and growth.



Educating the Human Potential

Launched in February 2025, *Educating the Human Potential* podcast dives into the critical issues shaping education today, blending research, lived experience, and bold ideas. Co-hosts Nicole Coman and Biff Maier invite experts from all walks of life to explore education through a Montessori lens.

MONTESSORI RESEARCH AND INNOVATION

Research Initiatives

AMS Research efforts comprise a unified portfolio with the goal of helping Montessori become broadly recognized as an evidence-based field rather than just a teaching method.

The *AMS Research Digest*: published quarterly, it is a concise, accessible synthesis of peer-reviewed research in Montessori and general education, and links research findings to classroom use and broader system needs.

The *AMS Whitepaper Series*: published twice yearly, this series offers a deeper, more focused exploration of issues at the intersection of Montessori philosophy, contemporary research, and practice. The first paper focused on Cosmic Education; the second, in process, will explore literacy.

The *Journal of Montessori Research*: published twice yearly, this open-access journal remains a key resource that contributes to scholarship for the Montessori community as well as the broader field of education—through empirical research studies, literature reviews, theoretical essays, and scholarly book reviews.

Since July 2024, the fellows in **MARS** (Montessori Action Research Symposium) have shared useful insights from their classroom work, helping to improve both teaching and research.

Together, these efforts create a strong system that supports our goal of building a research-based Montessori movement focused on clarity, credibility, and real impact.

The inaugural MARS Fellows celebrating completing their research journey



AMS Emerging Global Leadership Fellows Program



AMS's flagship leadership program, the Emerging Leaders Fellowship, has been in existence since 2017, and has graduated 8 cohorts of 123 individuals. For 2026, the program has been updated and redesigned to reflect global leadership across classrooms, systems, and cultures, and support participants in solving real-world problems in a hands-on way with coaching and peer support. In the new program, fellows will turn knowledge into action as they design, execute, and document a capstone implementation project within their community.

Cohort 8 of the AMS Emerging Leaders celebrating after completing their program at The Montessori Event 2026 in Washington, D.C.

MONTESSORI RESEARCH AND INNOVATION

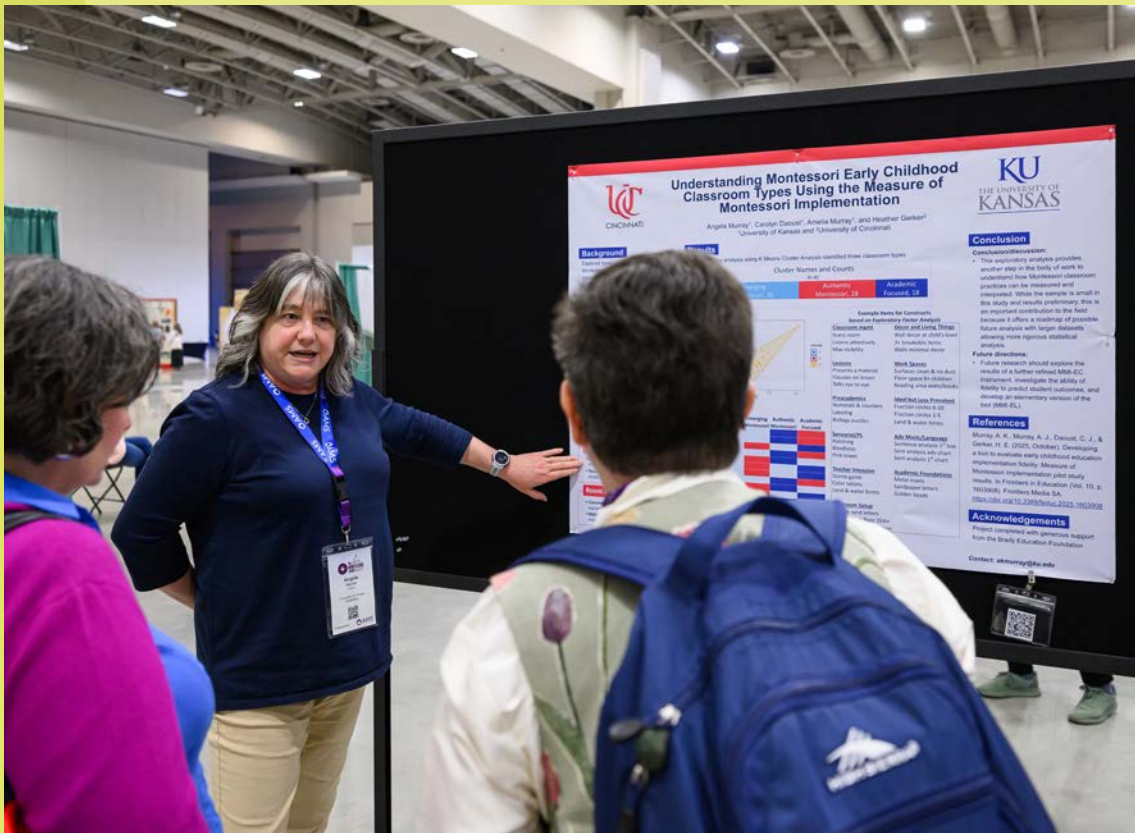
AMS Research Committee

At The Montessori Event 2026, committee members led sessions on “Growing Your Research” and “What’s New in Montessori Research?”; both new and experienced researchers had a chance to share their work. This helped connect research with practice and made research more accessible and relevant for the Montessori community.

The committee has also clarified and focused its work, with a few new directives: to build a connected and lasting research system, to actively support new ideas and practitioner involvement, and to make research a more visible part of Montessori.

MEMBERS

- Anita Hanks
- Ann Epstein
- Elizabeth Park
- Emily Yerington
- Heather Gerker
- Joanna Boone
- Kateri Carver
- Katie Keller Wood
- Laura Saylor
- Munir Shivji
- Nanette (Sheri) Schonleber
- Natalie Danner
- Vanessa Rigaud



Poster presentation exploring how inquiry, evidence, and reflective practice illuminate the complexities of teaching and learning and how shared work advances a broader conversation about innovation, equity, and continuous improvement in education



Some of the authors and editors celebrating the release of AMS's newest publication at The Montessori Event in Washington, D.C.

Reconstructing the Constructive Triangle

What happens when a publication becomes a dialogue across time?

From 1965 to 1989, AMS's professional journal, *The Constructive Triangle*, explored what it meant to build a movement in a changing world. Its pages captured questions of identity, practice, and purpose, and left a lasting legacy. This year, AMS brought that legacy forward through a new publication: *Reconstructing the Constructive Triangle: From Teacher Preparation to Transformation in Montessori Education*. The book pairs original writings with contemporary reflections authored by Instructor Academy facilitators and graduates, creating a dynamic dialogue across generations and lived experience. To extend this work, AMS also launched a companion tool kit, equipping teacher educators and adult learners with resources to bring reflections and practices discussed in the publication into their own learning communities.

Together, these efforts invite adult learners, teacher educators, school leaders, and practitioners worldwide into an active process of reflection, challenge, and ongoing transformation.



PROFESSIONAL DEVELOPMENT

This past year, AMS offered nearly 20 academy and certificate courses and added 4 new self-guided courses to help members further their skills and development. A total of 137 professional development certificates of completion were issued as of March 2026.

ACADEMY PROGRAMS

- Curriculum Coaching Academy: 2 new cohorts launched; 25 graduates in FY26

CURRICULUM COACHING ACADEMY COHORT 2 GRADUATES:

Carol Martorano
Cibele Thomaz
D'Arcy Mies
Elizabeth Mary Houghtaling
Hadas Trost
Katie Sala
Maple Jackson
Megan E. Fremming
Nilda Torres
Peggi Robinson
Rachel Bradford
Siobhan Sullivan
Stephanie Fernandez
Veronica Prudencio

CURRICULUM COACHING ACADEMY COHORT 3 GRADUATES:

Aislinn S. Noel
Anakaren Rodriguez
Azusa Crawford
Bridget Coffey
Elisa Jiwani
Grace Cook
Katie E. Luzac
Lisa Wall
Ri Hopkins
Rumya Rao
Temethia Joyner

- Teacher Education Director Academy: 1 new cohort launched; 14 graduates in FY26

TEACHER EDUCATION DIRECTOR ACADEMY COHORT 2 GRADUATES:

Hugo M. Hormazabal
Huma Kazmi
Jill Nowacek
Karin D. Osterberg
Laura Melissa Roark
Maria Consuelo Moncada Rodriguez
Maria Isela González Contreras
Mei Li Lu
Nancy Schluskel
Sharra Weasler
Sun Hye Yoo
Sushannah Hahn
Vanessa M. Rigaud
Xiaoyun Wang

- AMS Instructor Academy (newly revamped and updated): 1 new cohort launched; 13 graduates in FY26

INSTRUCTOR ACADEMY EARLY CHILDHOOD COHORT 3 GRADUATES:

Jingmin Wei
Michelle Rugel
Vivian Mozas

INSTRUCTOR ACADEMY INFANT TODDLER COHORT 4 GRADUATES:

Ardass Khalsa
Lilian Pavesi
Madhuri Susarla
Pamela Strobe
Stephanie Cavinder

INSTRUCTOR ACADEMY ELEMENTARY COHORT 4 GRADUATES:

Ashley Buntrock
Heather Ewing
Linda Kay Morrissey
Larissa Parrilla
Miriam Magre Loren

CERTIFICATE PROGRAMS

- Elementary Reading Certificate (1 cohort)
- Elementary Writing Certificate (2 cohorts)
- Elementary Science Certificate (2 cohorts)
- Early Childhood Reading Certificate (3 cohorts)

OTHERS

- Emerging Leaders: Cohort 8; 11 graduates in FY26

EMERGING LEADERS COHORT 8 GRADUATES:

Alejandra Velazquez
Ayme Houston
Elizabeth Steinocher
Emily Schult
George Borum
Jonnette Santos
Kalyn Gerrity
Kathleen Church
Pat Yulo
Philip Gregory
Tanya Muftic

- You and Your Child's Montessori Education - Early Childhood
- Online Onboard options, including Intro to Designing Online Classes and Art of Online Delivery using Canvas (new asynchronous formats)

NEW SELF-GUIDED CLASSES

- Effective Collaboration for Lead Teachers and Assistants
- Building a Culture Where Everyone Belongs
- Belonging: What It Is and Why It Matters
- Freedom Within Limits: An Introduction to Guiding Student Behavior

AMS continues to develop new professional learning opportunities, each designed to meet the evolving needs of Montessori educators and leaders. In addition, AMS is creating practical, research-based resources, videos, and tool kits that help you turn ideas into action, supporting meaningful implementation in Montessori classrooms and schools around the world. To explore AMS professional learning, visit learn.amshq.org.



AMS EVENTS

Regional Symposium Tour 2025–2026

The Regional Symposium Tour was designed to support the professional development of teachers and school leaders while also fostering regional connection and community. In Fall 2025, the tour visited 4 locations—Frisco, TX; Cincinnati, OH; Anchorage, AK; and Tacoma, WA—followed by Princeton, NJ, and Phoenix, AZ in Spring 2026.

At each stop, spotlight speaker and AMS 2025 Living Legacy recipient Charles Terranova engaged participants through humor, anecdotes, and philosophical reflection, illustrating the transformative power of observation in the Montessori classroom. AMS Board President Anita Hanks led a dynamic, conversation-driven spotlight session on the core values of AMS, creating space for authentic connection and dialogue among attendees. During the Montessori in Motion reading and discussion hour, participants explored key Montessori texts on normalization, grace and courtesy, observation, and concentration. This session was co-facilitated by Rachel Cole and Regional Action Commissioners, providing a meaningful opportunity for participants to connect directly with their RAC representatives.





Labposium 2026

For the past several years, AMS has hosted this annual event designed to connect a diverse group of Montessori leaders and future leaders around the shared mission of moving Montessori forward.

Labposium 2026, held in Hilton Head, SC, focused on “Leadership Recharged: Tools for Today, Momentum for Tomorrow.” Author and entrepreneur Suneel Gupta led participants in 2 days of reflection and activity around strategic energy management, resilience, purpose-driven leadership, and team empowerment.

Introducing Regional Labposium 2026

In Fall 2026, Labposium and Regional Symposium will merge to create a Regional Labposium, which offers attendees an enhanced experience. Prepared and Ready: Montessori Meets the Moment Regional Labposium is a collaborative learning experience for Montessori educators and leaders to explore the relationship between Montessori education, emerging technologies, and the adult’s role in preparing children for the future.

We invite both school and teacher education program leaders, as well as classroom practitioners, to join us at the following locations:

- 9/19 | Houston, TX: Westside Montessori, TX
- 10/3 | Atlanta, GA: Unity Atlanta Church
- 10/10 | Denver, CO: Montessori School of Denver
- 11/7 | Palo Alto, CA: Bowman School
- 11/14 | Philadelphia, PA: Norwood-Fontbonne Academy

New Heads of School Summit

The New Heads of School Summit marked the launch of a new leadership experience designed specifically for Montessori school leaders in their first years of leadership. Held in Washington, D.C., the three-day summit brought together 45 new heads of school for practical learning, collaboration, and preparation for the school year ahead.

Sessions led by experienced Montessori school leaders, including AMS Board members and staff, focused on real-world leadership challenges and opportunities unique to Montessori schools. Participants engaged in workshops, panel discussions, networking, and collaborative problem-solving designed to build confidence, strengthen connections, and provide practical tools to support successful school leadership.

REGIONAL ACTION COMMISSION

Deepening Community to Strengthen the Montessori Voice Globally



Since 2023, the AMS Regional Action Commission (RAC) has worked to promote collaboration, engagement, and interconnectedness among Montessorians across different U.S. regions and state groups. RAC has supported the AMS Regional symposia, organized quarterly regional cohort meetings with targeted focus topics and advocacy updates, and facilitated connections amongst TEPs, schools, individual members, non-members, Montessori leaders, and state organizations. RAC, along with the Montessori Public Policy Initiative (MPPI) has undertaken advocacy efforts to move Montessori forward.

To align with AMS's strategic goals of deepening community and belonging, as well as positioning AMS as the trusted global voice in Montessori education, RAC will become the Global Community Council (GCC). GCC will continue to support local

needs while also fostering a global network of Montessori voices. This evolution will allow AMS to serve children, families, and educators with greater coherence and impact across borders, and create pathways for shared growth, coordinated advocacy, and collective action.

The story of RAC is the story of AMS itself: a community growing stronger, more connected, and more aligned with the world it hopes to shape. RAC steps into a new chapter, one that will be defined by facilitating deeper connections, broadening perspectives, and a bold commitment to amplifying the voice of Montessori both nationally and globally.

2025 REGIONAL ACTION COMMISSIONERS

- Lisa Anderson
Southeast
- Maggie Bischoff
Midwest
- Saloni Mathur
Northeast
- Carol Martorano
Midwest
- Sharmeen Niazi
Southwest
- Lindsey Pollock
Southwest
- Megan Ricks
Pacific
- Laura Roark
Non-Contiguous
- Martha Teien
Rocky Mountain

MONTESSORI PUBLIC POLICY INITIATIVE

Advocating for a Better World through Montessori

The Montessori Public Policy Initiative (MPPI) is on the front lines of Montessori advocacy work—monitoring developments, providing updates, and helping the Montessori community understand how changes may affect schools, educators, and families. To sign up for MPPI's bulletins, go to montessoriadvocacy.org.

At the state level, Montessori programs—both public and private—continue to face policy challenges. MPPI has been actively supporting state advocacy leaders on a range of key issues, including:

- **Teacher credential recognition:** Seven states are making progress toward pathways for Montessori-credentialed teachers to obtain state licensure.
- **Quality improvement systems (QIS) and workforce registries:** Four states are advancing increased recognition of Montessori credentials.
- **Childcare licensing:** Three states are working toward policies that better recognize Montessori credentials and classroom environment needs.
- **State early childhood agencies:** As states reorganize early childhood systems, MPPI representatives are engaged in workgroups and discussions to advocate for improved access to high-quality Montessori programs.
- **Universal preschool/childcare initiatives:** Four state groups are collaborating with policymakers to ensure Montessori programs can participate and expand access.
- **In-state leadership:** Two states have seen Montessori advocates step into roles within state government, strengthening relationships and influence.



MPPI collaborates with the AMS Regional Action Commission (now Global Community Council) to reach Montessorians navigating policy challenges in their communities. Other partnerships include the National Association for the Education of Young Children (NAEYC), Zero to Three, Alliance for Early Success, First Five Years Fund, Education Counsel, and the Trust for Learning. Through shared advocacy, public comments, and coordinated messaging, these partnerships lead to a greater collective impact in an evolving policy landscape.

TEACHER EDUCATION ACTION COMMISSION

The Teacher Education Action Commission (TEAC) collaborates with the AMS Board of Directors to establish, refine, and uphold high-quality standards for teacher education programs (TEPs).



TEACHER EDUCATION ACTION COMMISSION (TEAC)

Gulzar Babool, Chair
Anne Slamkowski
Cate Epperson
Constance Laufersky
Diane Beckham

Heidy Lilchin-Simone
Kiran Paek
Mandi Franz
Paloma Johnston
Rachel McAlpine

Robyn Breiman
Rosemary Gosse
Uniit Carruyo

Accomplishments: Affiliation and the Teacher Education Action Commission

TEAC commissioners also partner with the Affiliation team in the AMS Office of Accreditation with the end goal of ensuring success for all AMS-affiliated teacher education programs. This past year, the Affiliation team has focused on improving process efficiency to provide more responsive services to TEPs and adult learners, while TEAC workgroups have focused on several key initiatives to ensure consistent quality across AMS programs. Outcomes include:

- Defining clear and consistent adult learner outcomes for all course levels;
- Refining the Reader Review process and designing a new training model for readers;
- Outsourcing production of Montessori credentials to decrease wait times, provide quality physical credential documents, and introduce secure electronic credentials;
- Continuing to facilitate community connections through virtual and in-person events, including Philososials, TEP Talks, TEPD + HoS meetings, Labposium, and The Montessori Event's Teacher Education Day;
- Extending global reach through recognizing new AMS affiliates in Mexico, Romania, and Hong Kong; onboarding new applicants in China, Korea, and Egypt; and supporting additional locations in Nigeria and Zimbabwe. Global development has also included the AMS community's presence at events outside of the United States, including representing AMS at the Montessori Europe Congress for the first time;
- Creating a revised and updated version of the *Teacher Education Program Handbook*, freely available on the AMS website;
- Holding programs accountable to standards for quality through specific enforcement of requirements.

TEACHER EDUCATION AFFILIATION VERIFIERS

Chelle Downey-Magee	Kiran Paek	Regina Swerts
Cindy Weiher	Melina Papadimitriou	Rosemary Gosse
Jesmine Lok	Paloma Johnston	Tanya Ryskind
Kathleen Gasbarro	Paul Epstein	



Upcoming TEP Programming

AMS MONTESSORI TEP FACULTY DEVELOPMENT COLLOQUIUM-ITALY 2027

Join AMS-affiliated teacher education program faculty and administrators for an immersive experience in the birthplace of Montessori education. Explore Maria Montessori's legacy through school visits, lectures, workshops, and cultural experiences while engaging in meaningful dialogue about the future of AMS teacher education.



Above: Michelle Kang with a student at Petite Maison Montessori School



Left: Petite Maison administrators and educators share a moment during a recent visit celebrating excellence in Montessori practice and the power of a thoughtfully prepared, collaborative learning environment. Pictured (L to R): Sheheryaar Mohamad, Sana Aamer, Gladis Martin, Rozina Ali, Michelle Kang, Munir Shivji, and Josie Aguilar.

EXPANDING OUR REACH

Positioning Montessori in Broader Conversations



Munir Shivji and
Michelle Kang

AMS and NAEYC

AMS Executive Director Munir Shivji and Michelle Kang, CEO of the National Association for the Education of Young Children (NAEYC), recently visited Petite Maison Montessori School (Richmond, TX). The school holds accreditation from both AMS and NAEYC, reflecting a deliberate and disciplined commitment to aligning Montessori principles with the highest standards in early childhood education.

This visit underscored the power of partnership, and what is possible when standards, preparation, and practice are intentionally connected. AMS's collaboration with organizations like NAEYC strengthens the broader Montessori and educational ecosystem by advancing quality, supporting educators, and elevating expectations across the profession. AMS and NAEYC, while grounded in distinct approaches, are united by a shared commitment to children, teachers, and families.

Working in closer alignment expands what each organization can achieve. For AMS, it creates new opportunities to extend the reach of Montessori standards, research, and practice. It also strengthens pathways for teacher preparation, professional recognition, fair compensation, and the conditions necessary for sustained excellence. For the broader educational field, it reinforces Montessori as a research-informed and scientifically grounded approach that contributes meaningfully to the future of early childhood education.

AMS and Build

The BUILD Initiative is a national effort focused on strengthening early childhood systems so that all children—regardless of race, income, or geography—have access to high-quality learning experiences and support. At its core, BUILD works with state and community leaders to design more coordinated, equitable systems that connect education, health, family support, and other services essential to a child's development.



AMS was present at BUILD's December 2025 conference, in Los Angeles, which brought together early childhood leaders, educators, policymakers, and advocates from across the country. Through a series of workshops and sessions, participants explored the current state of education in the United States, including how the evolving political climate may impact schools, access, and educational quality. These discussions emphasized the importance of cross-sector alignment and proactive leadership in navigating uncertainty while maintaining a focus on equitable outcomes for children. AMS representatives were able to engage with a wider network of education leaders, and as a result elevate Montessori in national conversations about the future of education.

EXPANDING OUR REACH

AMS Global News

Over this past year, AMS has made huge strides in global presence, in keeping with the AMS Strategic Plan 2030 goals to deepen community and belonging across the AMS network, and position AMS as the trusted global voice in Montessori education.

AMS Asia Conference

The AMS Asia Conference, held in June 2026 in Hangzhou, China, was co-hosted by the American Montessori Society (AMS) and the Zhejiang Montessori Training Center. The event examined how Montessori methods systematically cultivate future leaders, emphasizing the connection between child development, social-emotional learning, and leadership growth. It also highlighted the evolving roles of educators and school leaders as facilitators and change agents, and considered equitable pathways for implementing Montessori practices within Asia's diverse cultural contexts. The dynamic platform for sharing research, best practices, and emerging trends will shape the future of education in China and beyond.

Emerging Leaders Fellowship China

AMS's flagship leadership program, the Emerging Leaders Fellowship, has been operating in China for the last several years, reflecting a significant phase of global expansion, localization, and leadership cultivation within the Montessori movement. In the Chinese context, fellows often engaged in action research or capstone projects that addressed local needs, such as improving Montessori fidelity in bilingual classrooms, strengthening parent



EMERGING LEADERS FELLOWSHIP CHINA

Raya Zhang Xiaoyu,
Joey Chan Qiuchan,
Kevin Duan Yong,
Jayla Li Jingya,
Kimmie Yu Xiaolian,
Wu Yingran,
Fiona Zhao Weiping,
Meng Fanhua

education, and supporting teacher development. Fellows became part of an international community of Montessori leaders, creating bridges between China and the global Montessori movement and facilitating knowledge exchange, mentorship, and collaborative initiatives.

In November 2025, members of all three Chinese Emerging Leaders Fellowship cohorts gathered in Beijing for a forum themed "Grow Together," where they reflected on value alignment, collaboration and trust between teachers and families, and jointly embracing the responsibility of nurturing the next generation and contributing to the broader Montessori educational ecosystem.

Instructor Academy Residency in Europe

In April 2026, AMS hosted its first global Instructor Academy in-residency session at the Duhovka Institute (an AMS-affiliated TEP) in Prague, the Czech Republic. The event brought together 10 Early Childhood educators

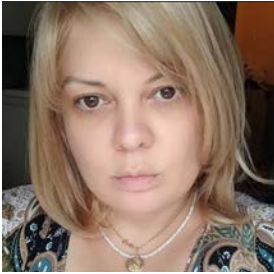
for an immersive experience rooted in Montessori philosophy. Led by Natasha McKenzie, with support from Melina Papadimitriou, AMS Director of Teacher Education, attendees explored core principles, engaged with materials, and benefited from the rich expertise of Duhovka Institute staff. Participants not only deepened their practice but also contributed to a shared vision for high-quality teacher preparation worldwide.

This gathering reflected AMS's expanding global reach and cultivated future opportunities for Montessori teacher education across Europe and beyond.

Montessori Europe Congress

In March 2026, AMS joined the Montessori Europe 2026 Congress in Riga, Latvia. The event reinforced a shared commitment to Montessori education across borders, and marked a promising next step in establishing AMS as an engaged and collaborative partner within the European Montessori community.

TEP Director Spotlight



Anca Raluca Pop is co-director of the AMS-affiliated Advanced Montessori Studies-Romania.

Tell us a little bit about yourself.

I worked as an Italian and English teacher and then moved to Rome to pursue a master's degree. I discovered Montessori education, and what struck me immediately was that Montessori addressed the many frustrations I had experienced as a teacher—about what was not working in the traditional education system. Montessori offered solutions, expanded my perspective, and brought depth, coherence, and a completely new understanding of the child and the learning process. I began formal Montessori training, and eventually opened my own Montessori kindergarten.

What does Montessori education look like in Romania?

Montessori education in Romania has grown significantly over the past decade. When I began my Montessori journey in 2014, there were only a few Montessori schools and the concept itself was largely unfamiliar to the public. Much of the work at that time involved raising awareness through events, conferences, workshops, and direct communication with parents and educators. Today, there are now over 50 Montessori schools

across the country and much more awareness about the Method; recently, national guidelines for Montessori education were published. However, we are still in a development phase. Most Montessori environments are currently found in the private sector; access within the public system remains limited.

Why did you start your teacher education program?

Working directly with more than 30 Montessori schools in Romania, we consistently saw the same gaps: educators struggling to build authentic relationships with children, lacking confidence to create or adapt materials, and feeling overwhelmed in their parent communication. These issues were affecting the quality and consistency of Montessori practice. In 2024, my business partner, Iulia Dumitrache (whom I met during Montessori training) and I launched our center, combining AMS's rigorous structure with adaptations relevant to Eastern Europe's cultural and educational context.

We currently offer Early Childhood (3–6) full credential programs and Introduction to Montessori Classroom Practice courses and are in the process of affiliating our Infant & Toddler program. Our first Early Childhood cohort included 16 students, and we are now welcoming a second cohort of 16, together with 13 students in our Infant & Toddler program. We are intentionally growing and preparing to expand with English-language programs and, in the near future, an Elementary (6–12) training.

The impact so far has been both visible and deeply encouraging. Our students consistently describe the training as transformative, not just informative—

giving them clarity, confidence, and the ability to apply Montessori principles with depth and responsibility. Through field visits, we have seen real changes in classrooms: more grounded educators, better-prepared environments, and stronger connections with children and families. Our goal now is to continue expanding this impact, contributing to a more mature and authentic Montessori movement in Romania and beyond.

Anything else you would like to share?

Romania has an early and meaningful connection to Montessori education. Between World Wars I and II, Maria Montessori's work was brought into the country through translations and adaptations by Ilie Şulea-Firu, who studied directly with her in Rome in 1931. His work, *The Child—A Divine Being, Yet Misunderstood*, reflects a profound understanding of the child as a being guided by an inner force of development. This vision remains at the core of our work today. Montessori describes the child as coming into the world from a place of unity and inner order, carrying within them a natural drive to construct themselves. The environment we offer can either support this inner development—preserving freedom, curiosity, and the joy of learning—or it can limit and suppress it.

Our mission, therefore, is deeply rooted in this understanding: to protect the child's inner construction. We strive to prepare environments and train educators who can truly see the child, respond to their developmental needs, and support them in becoming independent, capable, and whole human beings. In doing so, we are not only shaping education—we are shaping the future of society.

AMS LIVING LEGACY

The AMS 2026 Living Legacy: Meher Van Groenou

Meher Van Groenou's story has spanned many cultural bridges: from her early days in India to her leadership in California, she has spent nearly 50 years championing the Montessori Method. As the founder of the Montessori School at Five Canyons and Director of the Montessori Institute of Advanced Studies (MIAS), Meher has not only shaped the lives of thousands of children but has also mentored generations of educators.

In October 2025, AMS honored Meher with a celebration at Bowman School in Palo Alto, CA. The event was a poignant tribute to a leader whose five-decade career has been defined by a commitment to peace, dignity, and the transformative power of the prepared adult. During her remarks, Meher reflected on her deep connection to the philosophies of Gandhi and Krishnamurti, emphasizing that Montessori is more than a curriculum; it is a vehicle for social change. "To lead with respect and kindness," she shared, "is the highest form of education."



"Our journey is one of moving from perfectionism to self-compassion, allowing us to see every child with respect, hope, and understanding."

—Meher Van Groenou, AMS 2026 Living Legacy

The AMS 2027 Living Legacy: Darla Ferris Miller



AMS honors Dr. Darla Miller's lifetime dedication to expanding the reach, accessibility, and true meaning of quality Montessori education.

As a child, Darla was captivated by the question, "How do children grow and learn?" In the early 1970s, she began working in a Montessori school in Houston. She, along with

her colleague Margaret Ellison, soon recognized the need for a full-day, year-round Montessori model, and they worked together to create programs to serve Houston families. Soon, they had a waitlist hundreds of people deep.

Darla also recognized the need for infant and toddler education that was not simply a watered-down version of 3–6 education, and developed programs to meet the needs of the youngest

students. In 1990, based on her work with infants and children, she authored *Positive Child Guidance*, a still-widely-used textbook in the field of early childhood education.

Darla went on to teach at the college level, earn her doctorate, and transition into higher education leadership, all while staying committed to Montessori and to a new goal of making teacher education accessible to a wider audience. In the 2010s, she began traveling internationally to support Montessori teacher education throughout the world.

Throughout her life, Darla has worked to expand access to Montessori, and sees this work as her cosmic task. Her vision has uplifted infants and children, families and communities, and her vast network of colleagues and friends. As a credentialed teacher, trainer, and global mentor, she has shaped educators across many continents, guided by her deep commitment to children, families, and community. Darla's enduring legacy continues to inspire generations of Montessorians, shaping compassionate leaders and lifelong learners.

AMS RECOGNITION AWARDS



Meher Van Groenou

The recipients of the AMS Recognition Awards 2026 are a reminder that the future of Montessori is built through community. Their leadership, generosity, and new ideas keep expanding what is possible for children, educators, and the world we are building together. To all our 2026 award recipients, thank you: we honor your passion, service, and leadership. Your work inspires us, challenges us, and helps move this movement forward.

AMS LIVING LEGACY AWARD

Meher Van Groenou

DR. NANCY MCCORMICK RAMBUSCH AWARD

Martha Torrence

MARIA AND DOUGLAS M. GRAVEL BENEFACTOR AWARD

Thomas and Meredith Le Grand

MONTESSORI INNOVATOR AWARD

Dr. Katie Keller Wood

DR. MARIA MONTESSORI AMBASSADOR AWARD

Léa Todorov

AMS COMMUNITY SERVICE AWARD

Dr. Amira Mogaji

Candy Proctor

Loren DeNicola

Dr. Martha Teien

Mercedes Dugan

Renee DuChainey-

Farkes

THE AMS RECOGNITION COMMITTEE

Biff Maier,
Co-Chair

Tatenda Blessing
Muchiriri,
Co-Chair

Chandra Fernando
Charles Terranova

Gay Ward

Juliet King

Katie Dupuis,
Staff Liaison

Munir Shivji,
Executive Director

Robyn Breiman

Martha Torrence



AN AMS SCHOLARSHIP STORY

Amalie Joseph

During the 2025–2026 academic year, AMS (via the AMS Living Legacy Scholarship Fund) awarded over \$20,000 in scholarships to 25 adult learners. These recipients reflect the diversity of our global community, representing not only many different regions (and 16 different teacher education programs), but also all levels of Montessori education.

One scholarship recipient, Amalie Joseph, shared some words about what the award meant to her—and why giving to AMS plays such a crucial role in the sustainability of the Montessori community:

I knew the first time that I set foot inside a Montessori classroom that being a Montessori teacher was my calling. However, with a young toddler at home, and some medical issues within the family this past year, this goal was not within reach without extra financial assistance. The scholarship money I received from AMS allowed me to begin my journey toward becoming a Montessori educator. I have completed my first summer of my studies for Lower Elementary at The Barrie Institute for Advanced Montessori Studies (IAMS), and have been working at Barrie School (Silver Spring, MD) alongside my co-teacher and mentor, Ronke Okesola. I learn constantly from her, as well as the children in my class, my peers at IAMS, and all of the other wonderful Montessori educators with whom I work.

I am so incredibly grateful for this opportunity; it has allowed me to pursue my dreams. The scholarship gives people like me the ability to enter the magical world of Montessori education and share Dr. Maria Montessori's beautiful teaching philosophies with the young minds who will shape our future.

The journey toward becoming a prepared adult is continuous, has many paths, and requires contributions from many sources. The more we engage, the more we grow, in community and in practice.



The scholarship money I received from AMS allowed me to begin my journey toward becoming a Montessori educator. I have completed my first summer of my studies for Lower Elementary at The Barrie Institute for Advanced Montessori Studies.



Donate
to the AMS Living Legacy
Scholarship Fund:

THE BETH HOLLADAY ENDOWMENT FUND

Jim and Beth Holladay



This year, AMS received a generous \$200,000 gift from Jim Holladay to create the Beth Holladay Endowment Fund. The fund will support teacher education scholarships at AMS-affiliated programs, helping more people become Montessori teachers and preparing them to inspire future students.

The fund honors Beth Holladay, an AMS-credentialed Montessori teacher known for her dedication to children, learning, and community. Beth's work showed the heart of Montessori: care, observation, and respect for every child's potential. She brought compassion and purpose to her work as an educator.

Jim and Beth's life together, filled with love, resilience, and a shared love of music, reminds us of the human spirit at the heart of education. Even during hard times, their story shows grace, partnership, and a lasting commitment to what truly matters.

With this endowment, Beth's legacy will continue by supporting future Montessori teachers and helping to strengthen the movement she cared about so much.

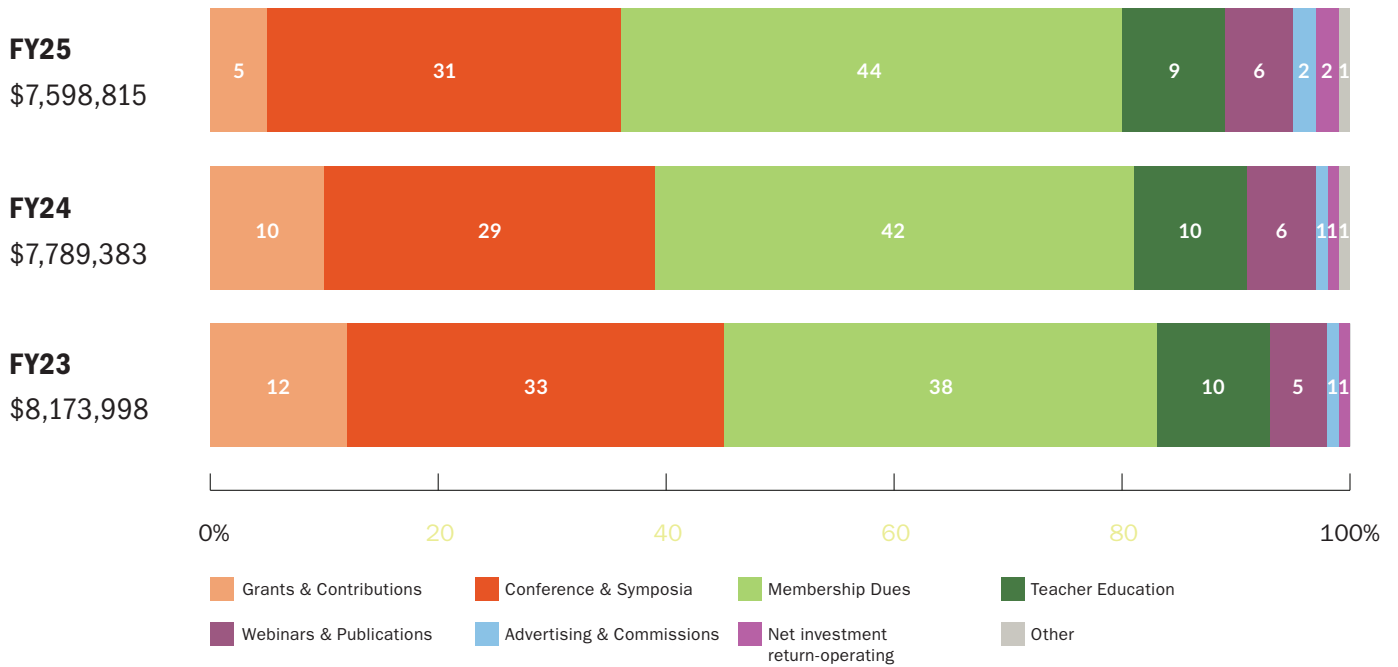
FINANCIALS

For the fiscal year ending June 30, 2025, AMS brought in approximately \$7.6 million. The core sources of revenue were Membership Dues and Annual Conference and other program-related income streams. Total expenses were approximately \$7.5 million, similar to the prior year, and reflected continued investment in AMS programs and services. The largest share of expenses—approximately \$6.3 million—went directly to mission-aligned work such as supporting members, offering professional development, and providing educational programming.

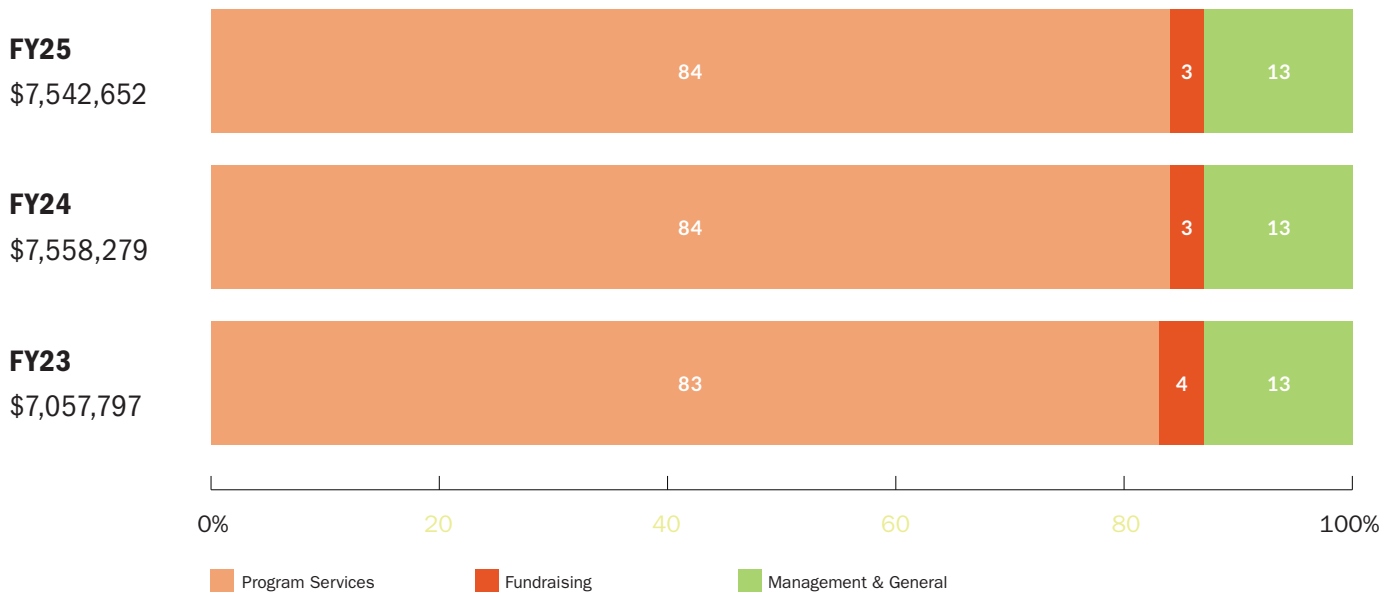
The organization is also in a solid financial position, with approximately \$4.9 million in assets and no debt. AMS remains focused on prudent financial management while continuing to invest strategically in programs and services that support its members and advance Montessori education.

	FY25	FY24	FY23
REVENUE AND SUPPORT			
Grants & Contributions	386,671	746,194	950,823
Conference & Symposia	2,390,971	2,245,586	2,742,028
Membership Dues and Fees	3,315,656	3,246,218	3,072,742
Teacher Education	736,211	762,512	813,397
Webinars & Publications	450,906	506,110	423,888
Advertising & Commissions	124,468	114,573	92,331
Net investment return-operating	129,950	102,317	-
Other	63,982	65,873	78,789
TOTAL REVENUE AND SUPPORT	7,598,815	7,789,383	8,173,998
EXPENSES			
Membership	1,095,355	969,428	950,810
Conference & Symposia	1,991,276	1,981,825	2,129,189
Products & Publications	1,251,842	1,408,037	1,120,777
Teacher Education	706,524	684,966	624,085
Other	1,288,976	1,259,472	1,068,648
TOTAL PROGRAM SERVICES	6,333,973	6,303,728	5,893,509
Management and general	1,004,574	995,519	905,145
Fundraising	204,105	259,032	259,143
TOTAL SUPPORTING SERVICES	1,208,679	1,254,551	1,164,288
TOTAL EXPENSES	7,542,652	7,558,279	7,057,797
Change in Operating Net Assets	56,163	231,104	1,116,201
Investment Return, net	385,746	472,863	246,713
Loan Forgiveness			-
CHANGE IN NET ASSETS	441,909	703,967	1,362,914
Net Assets Beginning of Year	6,639,703	5,935,736	4,572,822
NET ASSETS END OF YEAR	7,081,612	6,639,703	5,935,736

Revenue



Expenses



A NOTE OF THANKS

from the AMS Development Committee

THE AMS DEVELOPMENT COMMITTEE

Sabrina Binkley,
Co-Chair

Mary Beth Ricks,
Co-Chair

Anita Hanks

Katie Dupuis

Margarita Diaz

Munir Shivji

Vyju Kadambi

The Development Committee would like to extend its heartfelt gratitude for the generosity, commitment, and shared purpose that define the remarkable AMS community. Your support is the foundation upon which AMS continues to grow and thrive, and we are deeply appreciative of the many ways you contribute to our mission.

Our work centers around three key areas of giving: the Circle of Friends (see next page), the 1870 Society, and the Living Legacy Fundraiser. With the thoughtful engagement of dedicated subcommittees and the invaluable partnership of AMS staff, we have made meaningful progress in each of these areas, and strengthened a generous culture of giving across our organization.

Thanks to the dedication of our committee members, we have continued to deepen relationships with current and prospective donors through personal outreach. At the same time, we are working to expand awareness and understanding of the 1870 Society, including a new webpage that offers greater clarity and guidance for those interested in making a lasting impact through planned giving.

We are also inspired by the growing momentum around cultivating a broader culture of giving—through social media engagement, thoughtful storytelling, and new initiatives like “1870 Society Connect,” which is designed to strengthen relationships with our legacy donors.

We are exploring opportunities to bring additional fundraising expertise into our work and to strengthen our leadership structure to better support relationship-building and major gift development. Through it all, we remain grounded in gratitude. Your generosity, your belief in Montessori, and your commitment to this community inspire us every day. Thank you for being part of this journey with us—for your support, your trust, and your shared dedication to advancing the quality, authenticity, and integrity of Montessori education around the world.

With sincere appreciation,

Sabrina Binkley & Mary Beth Ricks
Development Committee Co-Chairs



CIRCLE OF FRIENDS

The Circle of Friends is a vibrant community of AMS champions whose generosity sustains and strengthens our shared mission. Through annual gifts of \$1,000 or more to any AMS fund, these dedicated supporters embody the spirit of giving that makes our work possible. Their commitment fuels AMS's mission to empower humanity to build a better world through Montessori.

By joining the Circle of Friends, members help sustain a dynamic hub for all things Montessori—from setting standards for schools and teacher education programs to accreditation, professional development, research, public policy, empowering peace and social justice initiatives, awarding grants and scholarships, and supporting growth of Montessori in the public sector. Each gift is a meaningful investment in the future of Montessori education worldwide.

The Development Committee and AMS Board are profoundly grateful to every member of the Circle of Friends. With humility and appreciation, we look forward to growing this community through meaningful connection and a shared commitment to advancing the quality, authenticity, and integrity of Montessori education across the globe.

2025-2026 CIRCLE OF FRIENDS

Amy Henderson	Martha Teien
Andrea N. O'Brian	Mary Beth Ricks
Anita Hanks	Mary J. Schneider
Anna Perry	Meher Van Groenou
Brette Rothfield	Michelle Blake
Christopher Academy	Michelle W. Morrison
Coral Reef Montessori Academy Charter School	Michelle Seyller
Debbie Senoff-Langford	Montessori School at Five Canyons
Diane M. Lanci	Munir Shivji
Fela Odeyemi	Pamela Zell Rigg
Geoffrey E. Bishop	PG&E
Jim Holladay	Robyn Breiman
Joyce Pickering	Sabrina Binkley
Julie Savignac McGavran	Shelton School & Evaluation Center
Juliet King	Shu-Chen Jenny Yen
Keyun Chen	Thomas & Meredith Le Grand
Laura Beaudry	Twin Parks
Mark F. Meyer	Montessori School-Central Park
Margarita Diaz	Vyju Kadambi



Thomas & Meredith Le Grand, the 2026 Maria and Douglas M. Gravel Benefactor Award recipients

DONORS

Fiscal Year 2025

AMS raises funds to support the organization's programs and services, which further Montessori education. Every gift, regardless of size, makes a difference. We are deeply grateful to our dedicated members and friends for their ongoing generous support. Listed below are donors for fiscal year 2025 (July 1, 2024 to June 30, 2025).

VISIONARY CIRCLE: \$400,000

Meher Van Groenou

FOUNDER'S CIRCLE: \$1,000-\$4,999

Geoffrey E Bishop
Anita K. Hanks
Robyn Hope Breiman
Michelle Seyller
Sabrina Binkley
Brette Rothfield
Vyju Kadambi
Mary Beth Ricks
Julie Bragdon
Brad Lemasters
Marie T. Conti
Coral Reef Montessori Academy
Charter School
K.T. Korngold
Aimee L. Allen
Mark F. Meyer
Debbie Senoff-Langford
Chandra Fernando
Martha Teien
Susan A. Kambrich
Jason Bailey
Bridget Parker-Barrett
Mary J. Schneider
Joyce S. Pickering
Martha Torrence
Susan Sipprelle
Marie M. Dugan
Paloma Johnston
Shannon Daves
Mercedes Dugan
Anne M. Hewetson

COMMUNITY CIRCLE: \$500-\$999

Anna Perry
Claire K. O'Neill
Deborah A. Kelley
Debra Senoff Langford
Diane Nickerson
Elizabeth A. Norman
Emily Lynn Miller
Joan Laracuent
Lisanne Mosher Pinciotti
Margarita Diaz
Maryellen Kordas

Michael Bowler
Michele Mohar
Rosemary Quaranta
Scott O'Brien
Sharmeen Niazi
Sharon J. Damore
Stephanie Flanigan
Susan Locke
Susie Shelton-Dodge
Tara Thorunn Speer

MONTESSORI CLUB: \$250-\$499

Alice Buchanan
Andrea N. O'Brian
Anne Larin
Beverly Smith
Dairo Moreno
Desislava Steova
Gretchen B. Courage
Gule Eram Andrabi
Jayne M. Martin
Joshua Lee
Karen Mellor
Kathryn Bobbitt Miller
Kiran Paek
Kristin E. Whitlock
Lisa Anderson
Loren A. DeNicola
Michele L. Seelinger
Michelle W. Morrison
Neil O'Brien

FRIENDS OF AMS: \$100-\$249

Adam Egberman
Alex Moisan
Amanda M. Franz
Amira D. Mogaji
Annie Breitenstein
Ashley Ann Voigt
Bhairavi Chandramouli
Carey Jones
Carol Martorano
Catherine A. Epperson
Cathy A. Rohrer
Crystal King
Dorothy L. Paul
Dr. Jun Institute Of Montessori Education
Elizabeth G. Slade

Emma Y. Johnston León
Eric L. Dustman
Gavin B Green
Ginny Cusack
Gulzar Jivani Babool
H. Harbour Winn
Hannah J. Lafranzo
Hema Jagada
Janet Hall Bagby
Jason Roth
Jennifer Aiken Fulton
Jennifer M. Nolan
Jessica Otterman
Jessie M. Filkins
Jingya Li
John Roemer
Joyce E. Stewart
Judith S. Beyer
Julia Gravel Jones
Julie Zenger
Katie Torres
Lai H. Dang
Laura O'Leary
Linda Zankowsky
Lisa Anthony
Luke Hedger
Madelyn Peck
Marci Martindale
Margaret Donovan
Margaret Pflugst
Maria E. Chaffin
Marierose T. Hoang
Marlena Carlson
Mary Macintosh
Megan Ricks
Melanie Brown
Melanie Pappas
Melanie Thiesse
Michael A. Silverstone
Michelle Blake
Montessori for Social Justice
Montessori School Of Northampton
Nancy Read Smith
Natalie M. Celeste
Nell Henry
Pat Dm
Patricia Molina

Pauline Novak
Peter and Tara Speer Giving Fund
Rachel A. McAlpine
Richard Ward
Rob Lee
Samantha Marie Gleisten
Sara Knickerbocker
Seth Johnson
Shannon Crothers Marth
Stephanie M. Benitez
Susan Swift
Susan Zoll
Tamara Sarkissian
Tara Greaney
Terry Welder
Thu-Huyen Nguyen
Tracey S. Revells
Victoria Virlee
Yamini Lal

PATRON CLUB: UP TO \$99

Aileen Easterbrook
Ali Wolfe
Alicia Johnson-Grafe
Alycia Mulgrew
Anders Beer
Arzu Baser
Barbara Jean Jens
Breana J. Sylvester
Callie Smith
Carla Hofland
Caroline Olago
Cheryl-Lee McMahon
Children's House of Hershey
Claire Giora Garcia
Consuelo Maria Gonzalez De Cossio
Crystal Gulzaman
Deborah A. Dinnocenzo
Deborah Sue Way-Salinas
Denise Shankin
Dina G. Gustin
Donna Kirschner
E. McCrae Harrison
Erika Grossman
Grace Cook
Heather Grossman
Holli Mathison

Isabella Jackson
 James Craig
 Jane C. Lemon
 Janell Melrose Kircher
 Jennifer Dearlove
 Jennifer Morgan
 Jennifer Nicole Wyld
 Jennifer Perry
 Jessica L. Huynh
 Kamala S. Buddhavarapu
 Karla L. Davis
 Kimberly P. Stegmaier
 Krista K. Barnett
 Kyra G. Lynch
 Linda Waterman
 Lindsey Chisholm
 Lizzie Makalisa-Dennis
 Lynette Goss
 Maria Ines Castillo
 Mary C. Zajac
 Maryann Morley
 Matilda Giampietro
 Matthew Clausen
 Matthew Godino
 Melissa D Kelly
 Melissa Romero
 Munir Shivji
 Nancy K. Bush
 Paige P. Geiger
 Raleigh Wilson
 Rebecca Hepperlen
 Renee A. Jolley
 Rita Brenner
 Rosemary Catherine Proseri
 Suzanne R. Buntrock
 Tanya Van Ells
 Teresa K. Jones
 Walter Schartner
 Yi Gu

Gabrielle Holt
 Janell Kirchner
 Jui-Chin Wan
 K.T. Korngold
 Kathy Heckert
 Lindsey Pollock
 Lisa Anderson
 Lori Palumbo
 Maria E. Chaffin
 Martha Teien
 Mary O'Boyle
 Maryellen Kordas
 Meher Van Groenou
 Natalie Anderson
 Nicole Schmidt
 Regina Dyson
 Richelle Eckenrode Smith
 Rita Banatwala
 Susie Shelton-Dodge
 Suzanne Meade
 Theresa Saburn
 Tori Inkley

We have made every effort to be accurate in acknowledging all who have contributed to our organization. If your name has been overlooked, please accept our apologies and contact Katie Dupuis: katie.dupuis@amshq.org. Thank you.

2025 GALA LIVE AND SILENT AUCTION DONORS

Alicia Rivers
 Alicia Warren Johnson
 Amanda Frankland
 Andrea O'Brian
 Andrea Zarate
 Anita Hanks
 Anna Perry
 Bethany Boland
 Christine Cleary
 Debra Hogan



AMS STAFF

Connected in Purpose

Munir Shivji, Executive Director

SENIOR LEADERSHIP TEAM

Deb Hoffman, CFO & People Operations

Scott Davidson, Senior Director of Accreditation & Affiliation

Ally Hammond, Senior Director of Marketing & Communications

Melanie Thiesse, Senior Director of Membership & Professional Development

Marie Conti, Senior Director of Community & Events

STAFF

Andrew Hofland, Director of Information Technology

Arcy Salgado, Marketing Coordinator

Ayana Crawford, Director of School Accreditation

Bay Warren, Member Services Coordinator, Professional Development

Brandy Lott, Membership Development Associate

Cynthia Barraza Monroy, School Quality Manager

Dot Ewing, Member Development and Operations Manager

Hannah Baynham, Director of Montessori Learning & Content Development

Hannah Martin, Program Lead

Jasmine Johnson, Member Services Specialist

Katanni Grey, Events Manager

Katherine Nguyen, School Accreditation Coordinator

Katie Dupuis, Executive Associate & Board Liaison

Dr. Katie Sharpe, Lead Instructional Designer for Learning Innovation

Lily Stange, Member Services Specialist

Melina Papadimitriou, Director of Teacher Education

Natalie Sanchez, Marketing Manager

Nikki Dipaola, Senior Accountant

Rachel Cole, Community Engagement Lead

Rachel Davis, Manager of Credentialing Services

Stephanie Cavinder, Teacher Education Lead

Dr. Vanessa Rigaud, Director of Research & Innovation

Xiaoping Mei, Accounting Manager

Zoe Goldberg, Digital Marketing Manager

CONSULTANTS

Carey Jones, Editor, *Montessori Life Magazine*

Cathy Durand-Horne, DEIB Consultant

Debbie Elias, Manager, The Montessori Event Conference

George Markham, Manager, The Montessori Event Exhibits

James Timmerman, Video Editor/ Videographer

Bolle Design, Design Consultant, AMS and *Montessori Life Magazine*

Trevor Bowman, Producer, *Educating the Human Potential Podcast*



A CAREER DEDICATED TO MONTESSORI EDUCATION

Marie Conti

After an extraordinary 50-year career in Montessori education, Marie Conti, AMS Senior Director of Community and Events, retired from AMS in June.

Marie's impact on AMS and the broader Montessori community has been profound. In her most recent roles at AMS, she oversaw The Montessori Event and was pivotal in establishing the Regional Action Commission and reinstating the Regional Symposium tour.

Marie's Montessori journey began in Philadelphia at Chestnut Hill College, where she earned her Montessori credential, Pennsylvania state teaching certification, and a master's degree in early childhood education. She spent 25 years in Montessori Early Childhood classrooms and shaped future educators as a faculty member, program director, and intern supervisor across multiple teacher education programs.

Her leadership extended across schools and organizations; she served as Early Childhood Director at Wilmington Montessori School (Wilmington, DE) and Head of School at The Wetherill School (Gladwyne, PA). She also contributed to AMS as a board member and as senior director of school accreditation, advancing quality and excellence in Montessori education nationwide.

Marie's legacy is one of dedication, service, and deep commitment to the Montessori movement. She has shaped countless educators, schools, and communities, and her influence will continue to be felt for generations.



ADULT LEARNER GRADUATES

AMS congratulates every adult learner who earned a credential in the past fiscal year.

A Pessoa M, Kendra	Anderson, Stephanie	Bajo, Jacqueline	Berkley, Jannah	Burgos Torres, Karen
Aamir, Nareman	Anderson Parnell, Emily	Baldwin Hart, Ambra	Berman, Danielle	Burke, Mackenzie
Abbas, Sarwat	Andino, Carmen	Bales, Laila R.	Bermudez, Raisys	Burke, Meghan Courtney
Abbasi, Farwa	Angulo, Dora Veronica	Ball, Ashely	Bermúdez Morales, Marielys	Burke, Nathaniel G.
Abbott, Katelyn	Anne Perez, Chelsea	Ballou, Helen	Bernazar, Jahaira	Burks, Shannon N.
Abdulmonem Elamir, Lemia	Anqi, Fu	Bandler, Taylor Rose	Berroteran, Amanda	Burrell, Merica
Abnee, Ellen	Aoke, Zhang	Banks, Kendra Mariah	Betancourt Rivera, Adriana	Burton, Jaclyn
Abou-Fakhreddine, Randa	Aparecida dos Santos, Tania	Bano, Naseem	Bharath Raj, Durga Devi	Bustamante, Emily
Abuyen, Kara-Jean	Aparicio, Marta Magan	Bano Siddiqi Marcus, Sana	Biddlecom, Jessica	Bustamante, Rosario
Acevedo Cordero, Gladys Y.	Aparna Ayyagari, Naga Sai	Banu, Nilofer	Bigman, Jeffrey	Butcher, Sharleen
Achilova, Ayna	Apodaca, Crystal	Bao, Haiyan	Bills, Aimee	Butts, Allyssa Marie
Acosta, Diana	Aponte González, Cristina	Bao, Ningning	Bin, Zou	Byrd, Jasmin
Acosta, Halley	Apostol, Duby	Baratier, Beatrix	Bingqian, Li	Byrne, Claire Elena
Acuna Hiri, Amanda	Appala, Sindhura	Barbery, Maria E.	Bittner, Brittney	Cabrera, Andrea
Adamová, Jana	Arastoo, Angelica P.	Bardales, Evelyn	Black, Mary Rose	Cai, Min
Adlam, Alana	Archibald, Alexandria	Bardales, Evelyn	Blackwood, Klarissa	Cain, Dr. Shandra
Aggarwal, Charul	Arcia Morales, Adriana	Barlow, Rebecca	Blakelock, Catherine K.	Caixia, Zhang
Aguilar, Jennifer	Arden, Skyler	Barnes, Susan	Bloedel, Celeste	Cajas, Gisela Maria
Aguilar Perez, Vanessa	Arena, Sonia	Barnum, Elizabeth	Blount, Judith Deanna	Calderin Rivero, Keila
Aguilera, Fabiola	Areola, Rozen	Baron, Cydnie	Blumer, Brendan G.	Caldwell Cahoon, Cherish
Ahmadshirvani, Neda	Arianys Wayne, Stephanie	Barrales, Janeth	Bo, Tiffany	Calupit, Christine Joyce
Ahn, Jiwoon	Aripaka, Kanaka MahaLakshmi	Barrera, Yasmin	Bohmeyer, Melanie	Campanella, Samantha
Ahuja, Radhika	Aristizabal, Tania	Barrett, Erin	Boland, Kara	Campos, Rufina
Aingell, Moira	Arntz, Ludovica Helena Francisca	Barrett, Sharon	Bonet, Endrina	Canales Rodriguez, Yarley
Aisha Lasley, Zakiya	Arocho, Yolanda Lausell	Barrientos Pena, Rochelle	Bonnes, Katelyn	Canalis, Mason
Akers, Breanne	Arrillaga Pedrosa, Marielena	Barroso, Savannah	Bonnette, Mavanie	Canipe, Ashlie Dawn
Al Jarar, Marwa	Arronson, Emma	Barrozo, Maria Rosario	Borges, Karine	Cano, Mariana
Alahouzos, Abra K.	Asare-Howard, Veronica	Baskaran, Athirai	Borgia, Megan	Canuto, Soraya
Alberich Navarro, Lara	Ascherio, Anne	Bass, Eden	Borja, Angela M.	Cao, Yaxu
Aldape Humphrey, Joy	Ascue, Jessica Marie B.	Bassetz, Zachary Joel	Borjas, Henry F.	Capitanich, Lindsay
Ali, Beenish Mariam	Askale, Helen	Basto, Jerome	Boutin, Kimberly	Caraballo, Monica
Ali, Ingy	Aslan, Jennifer	Batimana, Caselie Ann	Boxley, Hannah	Carballo, Alexia-Iris
Ali, Isneha	Auerbach, Lauren	Bauer, Amber	Boyden, Zachary	Carin Fass, Sydney
Alicea Negrón, Sareli A.	Austin, Amelia Kate	Bauman, Adam	Boyko, Erin	Carlson, Katherine
Alix, Mildred	Austin, Daniedra	Baumgartner, Elizabeth	Brewer, Kyleigh Marie	Carmen Catano, Jacqueline
Al-Jibouri, Hannah	Avendano, Lizeth Denise	Bautista, Samantha	Brezar Belcijan, Daša	Carral-Viens, Matthieu
Allen, Jeanna	Avery-Hammond, Elizabeth	Bazzi, Tarek	Brick, Leah	Carranza Vargas, Maria Yorlery
Allen, Kamry	Aviles, Sofia	Beacom, Bailey	Brito Lobos, Cecilia	Carrasco, Irascema
Allen, Tai	Ayala Negrón, Marirosa	Beardsley, Tsiarina	Brown, Andrea	Carrasquillo, Teresa
Allred, Quiria	Ayar, Cassidy	Beaty, Ellen	Brown, Brittany	Carroll, Angela
Alqaisy, Abeer	Baasankhuu, Doljinsuren	Bechard, Rita-Marie	Brown, Danielle E.	Carroll, Emily
Alsop, Kerrie	Backström, Runa Lien	Becker, Danielle Rachel	Brown, Kiara	Carroll, Kathleen Ann
Altorfer, Madeline	Badea, Margeurite	Becraft, Elora	Brown, ShaRon Shanta	Carroll, Megan Ann
Alvarado Rodríguez, Yasmin	Bae, Suhyun	Beijia, Zhou	Brown Williams, Davenna	Carroll, Nadine T.
Alvarez, Margaret	Báez Rivera, Odalys	Beiler, Heidi	Browne, Olivia	Cartagena Acosta, Joelyz Marie
Alvarez, Sarah	Bagepalli, Prabha	Belanger, Amy	Bruce, Jennifer	Carter, Kendall
Alves de Oliveira, Alexandre	Bagheriyehhagh, Elhamsadat	Bell, Cassidy	Bruinooge, Taryn	Carvajal, Maria Vianney
Al-Zakri, Concepcion Marie	Baglivo, Tara	Bello, Adriana	Bryan, Stefanie	Casing, Joan Herrera
Amar, Aileen P.	Bagwell, Kelli G.	Beltran-Neal, Maira Fernanda	Buckley, Anna	Casper Gohr, Gena
Amaya, Aileen	Bahena, Virginia	Beniez Aponte, Mignelly	Buechler, Heather	Castaneda Bernales, Alessandra
Amundson, Tielsa	Bailey, Melissa	Berardinis, Aimee	Buehler, Claudette	Castanza, Emily
An Lee, Chia	Baillif, Nikki	Berent, Julie	Buenfil Nevarez, Maria Gabriela	Castillo, Kenya
Anandkrishnan, Aishwaryalakshmi	Bain, Kristen	Bergada Bueno, Carla	Buhain, Millinary	Castillo Hernandez, Raquel
Anderson, Jessie	Bajo, Jacqueline	Berk, Ellie	Buoncrisiano, Odile	Castillo Roman, Ivannia

Castro, Mara H.	Cheng, Gurumeet	Colbert, Ayesha	Dascoli, Erin	Diao, Mengmeng
Castro, Yohana	Cheng, Wen-Wen	Colby, Marybeth J.	Dasigi, Sravanthi	Dias, Ronali
Castro Alonso, Alyssa Vanessa	Cheng, Wong U	Cole, April	Dauster, Katherine	Dias de Oliveira Zorzetto, Marilene Candida
Castromalaga, Lidia Cecilia	Cheng, Xing	Coll, Elizabeth	Davenport, Maegan	Diaz, Angelica
Cates, Chiara	Cheng, Zhijun	Colman, Ali Rose	Davies, Lyric Delilah	Diaz, Dianna
Cavallari, Bianca	Cheng Cheng, Lingzi	Colombo, Sandra	Davis, Katrina	Diaz-Castro, Brenda Fernanda
Cedeno, Valeska S.	Chengmin, Qu	Colon, Natasha	Dawley, Elizabeth	Diaz-Leon, Paulina
Celeste Burns, Chelsea	Chenliu, Wang	Colón Alvarado, Erika A.	Dawood, Nebras	DiaBacco, Carla
Celik, Nilay	Cherrington-Kreissl, Elizabeth A.	Colón Cruz, Jasbelene	Dawoud, Rana	DiGennaro, Sabrina
Celina Fernandes, Sr. Maria Fiona	Chhit, Savanna Kaylin	Cong, Li	Day, Elizabeth	Dimagro, Lisa
Centeno, Angelica	Chi, Jing	Cong, Xueqing	De Jesus Gonzalez, Janice	Ding, Ning
Centeno Hernández, Eduardo Gabriel	Chi Chang, Kelly	Conlon, Jamie L.	De Jesús Morales, Yaellies Arlene	Ding, Xiwang
Cesarío Robles, Carmen	Chico-Herrera, Amanda C.	Connor, Tal B.	De Jesus Murillo, Emely Gabriela	Ding, Yanlan
Chace, Sam	Chih Hu, Wei	Contreras, Marlen	De Jesús Rivera, Tairi V.	Dinkler, Cynthia L
Chaekyung, Ahn	Childers, Jaclyn	Cooper, Briana	De La Cruz Nightingale, Frankie	Dionne, Lindsey T.
Chai, Liqing	Ching Yi, Lau	Cordova, Michael	De la Cruz Sánchez, Natividad	Dissanayake, Ruvani
Chang, Hsin-Hua	Cho, Candice B.	Cornelius, Tessa S.	de la Rosa, Karmen Victoria Feliciano	Dixon, Tiawona
Chang, Liu	Cho, Yunhee	Corona, Maynette	de la Rosa Cole, Danielle	Doelman, Alicia
Chang, Niu	Choi, Eunji	Correa, Maria	De La Torre, Evangeline	Dong, Yuanyuan
Chang, Youngjoo	Choi, Yoonyoung	Correia, Jennifer	De Leon, Debora	Dongdong, Jia
Chang, Yunying	Choon Lee, Yeok	Corrigan, Christine V.	de Oliveira Tenorio, Leticia	Dongli, Zhao
Chang, I-Chung (Blair)	Choquette, Caylin	Corteal, Samantha	Dean, Leslie H.	Donnell, Theresa
Chang, Yating	Chou, Wen-Chien	Costa da Silva, Kivia Tallyta	Decormeille, Benoit	Donnelly, Kira
Chao, Jiang	Chowdhury, Bidisha Guha	Costello, Caelainn	DeCosta, Courtney	Doria, Jami
Chaparro R., Valeria V.	Chrisman, Kimberly	Cottrell, Jennifer	Deeba, Audrey	Dorman, Amy Victoria
Chappelone, Carlien	Christal, Gabriella C.	Cox, Grace	Defne Aytac, Tuğçe	Dragan Kivett, Laura
Chartchay, Nina	Chu, Chi-Hsien	Cozatl-Perez, Lexus	DeJesus, Mirian	Drake, Marie
Chase, Amy Elizabeth	Chu, Manyu	Crina, Alexandra Daniela	Del Fierro, Jillian	Drake, Sharon
Chase, Sarah	Chu, Suyoung	Croteau, Vanessa	Del Rocio Chavez-Morales, Veronica	Drake, Taylor
Chaviano, Enid	Chuchan, Dai	Crotteau, Luke J.	Delaney, Tina	Dreglea, Lucia
Chelmicki, Sarah	Chun, Yeh Su	Crowley, Rachel	Delgadillo Ornelas, Cynthia Margarita	Driscoll, Martin
Chen, Fenglan	Chun Tai, Wong	Crumpler, Leigha	Delgado, Maria E.	Drozdovska, Iryna
Chen, Bing Xing	Chung, Yu-Ting	Cruz Catalá, Alexa	Delgado, Rommy	Dryer, Lauryn
Chen, Chia-Hui	Chuntao, Wang	Cruz Cruz, Migdalis	Delude, Parker	Dsouza, Sydelle Perpetua
Chen, Meijing	Chunting, Liang	Cruz Gallardo, Claudia	DelVecchio-Leach, Elizabeth Ellen	Du, Lingli
Chen, Mengji	Chunyan, Zhang	Cubillas, Maria Leticia	DeMilo, Audrey	Du, Shudi
Chen, Xiang	Chunyang, Pang	Cuevas Santos, Paquita	DeNicola, Loren	Du, Yexin
Chen, Yuanyuan	Chunyu, Zhang	Cui, Zhang	Dennis, Brianna	Duan, Dandan
Chen, Chieh-Ying	Churchill, Rikki	Cui, Jinchuan	Denti, Claudia	Dubey, Anuradha
Chen, I-Chia	Cimpueru, Anca Denisa	Culp, Jennifer	Denton, Shelley J.	Dubrowski, Anna
Chen, Jiana	Cintrón Cabrera, Ramonita	Cummings, Elena	Depusoy, Micah	Duderstadt, Johanna
Chen, Lili	Ciolino, Barbara J.	Cummings, Patricia	Deran, Meng	Duggan, Cassandra
Chen, Mei-Chien	Ciqing, An	Curran, Jaclyn R.	Deschenes-Neville, Kalee Shea	Dulaney, Wendy Lee
Chen, Qiongjun	Cisneros, Zurima	Curtin, Katie	Desiderio Ortiz, Yara	Dumanog, Elizabeth L.
Chen, Qiuyun	Citlalli Claudis Posas, Brenda	Curtis, Gina Marie	Desiderio Rondón, Franceska	Dunn, Sarah Izzabelle
Chen, Teresa S.	Claiborne M.Ed, Shanneka L.	Cusack, Sam	Devenish, Georgianna	Duppée, Sophia
Chen, Xiaojiong	Clark, Kristin	Dagdelen, Hacer	Devinish, Georgianna	Dupre, Laura
Chen, Yi-Chun	Clavijo Sanguino, Fabiana	Dai, Hanyue	Devi Dhanakotti, Gayathri	Duran Rojas, Kristhel
Chen, Yiting	Clayson, Brittny	Dai, Yu-Fang	Devia, Dalia	Durand, Sylvia
Chen, Yonger	Cleary, Cleo	Dale, Emma Marie	Devigne, Stanislas	Dymond, Candace
Chen, YueYing	Clemente, Joceline	Dalla Santa, Marine	DeWaal, Candace	Eagleburger, Róisín
Chen, Yujia	Clements-Seaberry, Gabrielle	Dalton, Dana	Dewani, Menaz	Edwards, Heather
Chen, Yunfang	Close, Jennifer Marie	Daluwatte, Lahiruni Lakshika	Deye, Kevin	Edwards, Leila K
Chen Fang, Jia	Cocchiaro, Jillian	Daly, Hillarie	DeYoung, Lisa	Edwards, Mikayla R.
Chen Martinez, Anny	Coe Romero, Stephanie	D'Annunzio, Antonella Lucia	di Cugno, Orsola	Eicholz, Erika
	Cohen, Leonor	Darnell, Tara	Di Paula Ramos Novaes Luz, Alfredizia	Eidelson, Erica
	Cohen Sedgh, Sadey	Dasaeva, Kamilya Ildarovna		

ADULT LEARNER GRADUATES

El Azem, Samantha Gail	Ferrer, Natalie	Gay, Amanda Gail	Grochowski, Kallie	Henson, Charles
El-Ansary, Noor	Ficeto, Teagan	Gazioglu, Dilek	Grunberger, Pilar	Herdirp, Kaur
Elise, Genevieve	Fifer, Amy	Gebhardt, Heather	Gu, Acai	Hermansson Casas, Selma C.
Ellelson, Sylvan	Figueiredo Lobo, Alice	Gelinas, Julia	Gu, Linning	Hernandez, Avary
Elliott Beard, Nora Lucienne	Figueroa, Keyla L.	Gergali Espiritu, Anny	Gu, Ping	Hernandez, Ligia
Ellis, Natalie	Figueroa, Kristen	Germann, Gretchen L	Guajardo, Ciara Carmen	Hernandez, Marshleen
Ellison, Hannah	Filio Santana, Sarahi	Getman, Kelsey	Guanjie, Xue	Hernandez, Melody
Elsass, Irma	Finley, Laura	Ghalambor Dezfouli, Sareh	Guarata, Ynes	Hernandez, Rosa
Emmanuel, Lis	Fish, Emily	Ghosh, Suparna	Guerra, Dalilah	Herrera, Yamileth
En Yang, Ping	Fitzpatrick, Sarah	Gibo, Kaori	Guerrero, Meredith T	Hetzel, Samuel
Endres, Carly	Fitzsimmons, Kelsey	Gibson, Tosheba	Guevara, Samantha	Hill, Emily
Engelken, Kelly	Flaherty, Melinda	Gifford, David	Guilan, Yin	Hill, Sawyer
Engler, Amanda	Flores, Adriana	Gilbert, Katherine	Guimarães, Priscilla Rodrigues	Hillis, Jordan
Eom, Guljin	Flores, Ivanna	Gilliam, Lynasia	Guirong, Sheng	Hindmarch, Erin
Ercilia Aupont, Yashira	Flores, Marcela	Gil-Romandia, Briednette	Gunder Fosby, Martin	Hines, Danielle Nicole
Escobar, Maritza	Flores, Marisel	Giraldi, Katie	Guo, Lina	Hinkley, Madison
Escobar, Yadira	Flores Diaz, Leslie	Giunta, Isabella	Guo, Wenling	Hinojosa Orellana, Scarlen
Espinosa-Csortos, Tiffanie Catheryn	Flores-Juarez, Jocelyn Carrina	Gizatullina, Eliina	Guo, Xiaojuan	Hiren Mehta, Radhika
Esposito Garmino, Landy Stephanie	Flores-Perez, Eva	Gladstone Barrett, Hallie	Guo, Zhan	Hirt, Amy
Esterkina, Inna	Flynn, Wiljane	Glatthar, Gina	Gurley, Andrea	Hitchcock, Sharlow
Esteva Beloso, Carla	Forsgren, Amanda	Goda, Nour M.	Gutierrez, Lorena	Hixson, Elwanda
Estrada-Martinez, Amparo Juana	Forstner, Erica Nicole	Godines, Alyssa	Gutierrez Corripio, M. Sofia	Hoft, Stefanie L.
Etienne, Gennica	Foster-Urieta, Megan	Godwin, Kelly	Guzmán Portillo, Verónica	Hoi Kei Grace, Chui
Evangelista, Mary Frances	Fowler, Alissa	Gómez Jiménez Tuset, Estrella	Guzzi, Kristen	Holden, Jamie
Evans, Ashley	Fraley, Elizabeth	Gomez-Lara, Fabiola A.	Haag Walker, Kira Rosanne	Hollis, Allison
Evans, Elisabeth	Franco, Rebeca	Gonatas, Rachel	Habba, Pancy	Hollis, Sarah
Evans, Samantha Marie	Francois, Ruth	Gondhalekar, Aparna	Haddock, Sara	Hollrah, Lacey
Eyster, Carolina	Frederick, Sheena	Gong, Simeng	Haichao, Ban	Holmes, Dineke
Fabien, Ashley T.	Fredrickson, Stephanie	Gonzales, Ben Andrei V.	Hailan, Zheng	Holmes, Megan
Faheem, Rabia	Freeman, Robin	Gonzalez, Ariim	Halford-Cortes, Sophia	Hong, Chaewon
Faisal, Yasmeen	Freese, Cindy	Gonzalez, Audrianna	Hall, Kori	Hong, Yifang
Fajardo, Stephanie	Friedman, Masha	Gonzalez, Charlene	Hamilton, Rebecca	Hongyan, Jiang
Falotico, Anna	Friel, Melissa	Gonzalez, Cristina A.	Han, Caiyun	Hongzai, Zheng
Fan, Li	Friend, Rachel	Gonzalez, Dina	Han, Seonmin	Hope Taylor, Frankie
Fan, Qi	Fritz, Taryn	Gonzalez, Nancy	Han, Jiyeon	Horace, Shelley
Fan, Wenzhu	Fu, Ying	Gonzalez, Silvia	Han, Lin	Hosdurg, Preeti
Fan, Jinghua	Fuentes, Tania Ivette	González, Yesenia	Han, Zongfan	Hou, Jun
Fang, Hongxiu	Fuhua, Hsu	González, Valeria	Hanneken, Mia	Houissa, Faten
Fang, Yan	Fukuta, Ryohei	González, Wilmarie Carlo	Hansbhai, Suaad	Houštková, Ruth
Fang Zhang, Gui	Gale, Benjamin Michael	Gonzalez Arreola, Leslie A	Hao, Boshuo	Houston, Ayme
Fangfang, Chen	Galindo Orozco, Esmeralda J.	Gonzalez Blanco, Sara	Hao, Tianqiao	Howle, Lauren
Farber, Sarah	Gallego, Silvia	Gonzalez Bonilla, Isabella	Harold, Jaden	Hoyos Ossa, Sonia
Fardonk Cuadra, Krystal	Gallegos, Angelica	González Castro, Yarmaris I.	Harper, Marnie	Hszü-Min, Yang
Faris, Chloe	Gamez, Janet	González González, Yesenia	Harper-Brees, Nathaniel James	Hsu, Shu-Hsin
Farley, Kendra L.	Ganguly, Debotri	González Hernández, Nilsa	Harrell, Ashley M.	Hu, Grace
Farrell, Amy	Gant, Megan	González Méndez, Jaimary	Harris, Talia S.	Hu, Cai-Lin
Farrington, Cassie	Gao, Di	González Ramos, Natalie	Harrison, Winter Alexandra	Hu, Jue
Feezell, Presley	Gao, Lingyue	Gonzalez Soto, Ruby	Hatono, Kaori	Hu, Kan (Amanda)
Fei, Liu	Gao, Hongjuan	Gorai, Sudha	Hauck, Grace Margaret	Hu, Shuangyi
Fei, Zhu	Gao, Shishi	Gordon, Breea Nikole	Hayden, Hallie	Hu, Tingting
Feiyu, Bai	Gao, Shuang	Gorman, Roxanne Jude	Hayes, Allyson	Hua Wu, Ya
Feldman, Courtney J.	Gapayao, Marica	Gorr, Jessica	He, Minne	Huailan, Tang
Feldman, Shelby	Gapeyeva, Ela	Gotcher, Angela	Headley, Natalie Lorrain	Huamanlazo Espada, Rosa Yasmin
Feng, Guangmin	Garas, Mary	Gourd, Monique	Hebdon, Riley	Huan, Chen
Feng, Jing	Garcia, Erika	Grace Benito, Mary	Hee Hom, Sun	Huan, Liu
Fengwen, Liang	Garcia, Jinia Allyza	Grace Dugan, Sophia	Heerboth, Eliza	Huang, Hongman
Fengxia, Li	Garcia, Lutgarda	Graham, Chrystal	Hegman, Emily	Huang, Bo-Chih
Ferch, Lauren E.	Garcia, Roma	Grassam, Alexis	Helton, Kitti	Huang, Huang
Ferguson, Christine	Garcia, Rosa Isela	Grebow, Madeline	Henderson, Stephanie	Huang, Yanna
Fernanda Ortiz Perdomo, Diana	Garcia, Sandy N.	Green, Leila	Hendricks, Crystal	Huang, Xinyu
Fernandes Costa, Esdras	Garcia, Emely Kristeen	Greene, Madison	Hengyang, Wei	Huang, Jiahui
Fernandez, Fatima	Gardner, Ashley	Gregg, Heather	Henley, Maria Justine	Huang, Luping
Fernández Morán, Suhey M.	Gartcheva, Milena	Gregory, Michelle C.	Henriquez Guerra, Paola Ines	Huang, Mulan
Fernando, Melanie Nuñez	Garza, Melina	Grimstad, Kylie Raye	Henry, Rachel	Huang, Zehui
Ferrara, Shari	Gasque, Reeves	Griswold Gustin, Dina		Huang, Shuang

Huayin, Luolan	Jiaojiao, Li	Katz, Karen	Lambrakopoulos, Ana	Li, Pingping
Hudkins, Kristen Nicole	Jie, Qin	Kaufmann, Adi	Lambrecht, Sierra	Li, Qianying
Hue, Vu Thi	Jieling, Guan	Kaufmann, Samantha	Landa, Jennifer Mary	Li, Qu
Huey Doong, Sy	Jilbert, Adrienne K.	Kaur Hothi, Rajwinder	Lane, Rachael	Li, Sandy
Hui, Lv	Jing, Li	Kaur Singh, Amanpreet	Lanfang, Dong	Li, Shi
Huiling, Yan	Jing, Liang	Kaydee, Maryann	Langan, Shannon	Li, Simin
Huishuang, Wu	Jing, Wang	Ke, Xia	Langenderfer Fenicle, Dawn	Li, Tiantian
Huixia, Liu	Jing, Wang	Keathley, Joslyn	Lansaw, Sarah	Li, Wenwen
Huma, Zille	Jing, Xiong	Keating, Anjelina	Laporte González, Mayirette	Li, Xin
Hung, Chi Hang Anthony	Jing, Yu	Keen, Sophia	Lapow, Rachel N.	Li, Xue
Hunt, Katie	Jingjing, Yang	Kei, Wong Man	Lardie, Kelly M.	Li, Yilin
Hunter, Delanie	Jinjin, Zhang	Keil, Frances	Larijani, Shima	Li, Ying
Hunter, Emily	jinjing, Yao	Keller, Brittany	Lark, Amanda	Li, Zhang
Hurley, Lily	Jinming, Guo	Kelly, Nichole	Larsen, Ann-Katrin	Li, Zhenyuan
Hurtado, Sandra	Jinyuan, Li	Kerns, Justin	Lavergne Torres, Francesca B.	Li Li, Bao
Hussain, Saiyeda Zehra	Jinyun, Pan	Kesapragada, Sudha R	Lawrence, Brittany	Lian, Mengting
Hutchison, Star	Jixin, Shi	Khan, Zara	Lawson, Staci	Lian, Liu
Hvizdos, Annalea	Johns, Madeline	Khanh Ly, Nguyen	Lay, Evelyn E	lian, Qian
Hwang, Liang-Yu	Johnson, Anna	Khzam, Raneem	Lazarte, Zsofia	Lian, Xue
Hwapyeong, Shin	Johnson, Brian	Kievit, Erin	Le, Xiu	Liang, Jinfang
Hyatt Linehan, Erika	Johnson, Dorothy	Kim, Youngsuk	Le Fort, Magdalena	Liang, Hongyan
Hyein, Shim	Johnson, Kristine	Kim, Amy	Leahman, Ashley	Liang, Jingyao
Hyejin, Wang	Johnson, Maria C.	Kim, Bokyoung	LeBoeuf, Stephanie	Liang, Sheng
Iioka, Kaori	Johnson, Miriam	Kim, Carol Eunji	Lecke, Catherine Sara	Liang, Mi
Ilmi, Shakeela S.	Johnson, Rebecca	Kim, Hyeonsu	Lederer, Matthew Z.	Lichao, Jia
Imran, Mehwish	Johnston, Amanda	Kim, Hyein	Lee, DaGeon	Lien, Zoe
Inguilizian, Zaghigh	Jolly, Anupreet	Kim, Hyunjoo	Lee, Hyunjung	Light, Nicole
Irish, Alissa	Jones, Amanda Nichole	Kim, Jungim	Lee, Ingrid	Lihua, Song
Irwin, Brielle	Jones, Karen M.	Kim, Minhee	Lee, Jeongin	Lihua, Tian
Isabel Autor, Zaina	Jones, Piper	Kim, Minhyee	Lee, Jiyoun	Lijuan, Zhang
Ishiwata-Tong, Rika	Jones, Skye Rosalee	Kim, Minkyoun	Lee, Subin	Lin, Chanru
Isoya, Ayako	Joo, Seunggha	Kim, Nayeon	Lee, Prisca	Lin, Hsin-Yi
Ivanova, Nadezhda	Jorda Prats, Rebeca	Kim, Seryun	Lee, Sandra	Lin, Juanchun
Ivnik Anderson, Natasa	Jordan, Nadine	Kim, Yeonjae	Lee, SuYeon	Lin, La
Izquierdo Ardila, Angela Paola	Jordan Tondelli, Ingrid	Kim, Minji	Lee, Suyoun	Lin, Shixia
Jackson, Gina	Joseph, Jerony	Kim, Taerim	Lee, Wing Tung	Lin, Shuzhen
Jahid, Ayesha	Joseph-Ocasio, Kimberly	Kim , Yechan	Lee, Yu-Xin	Lin, Simeng
Jaimes Medina, Mildred	Jotzat, Emily	King, Michelle E.	Lee Miller, Amber	Lin, Susian
Jaiswal, Priyanka	Joufflas, Stephanie	King, Agnes	Lei, Liu	Lin, Yanlin
James, Maxine	Ju, Minsu	King, Jennie	Leigl, Colleen M.	Lin , Yunjie
Jangra, Jeena	Juan, Chen	King, Nina	Lema, Jose	Lina Arimas, Bertha Ann
Janoušková, Veronika	Juan, Guo	King, Sandra Jewelle	Leng, Yanhua	Linan, Zhao
Jaoude, Eliana	Juan, Li	Kobori Stevens, Andreia	Leong, Si Man	Linda Chen, Ying-Ling
Jasmeen, Jasmeen	Juan, Lin	Koehler, Courtney M.	Leshu, LI	Lindaman, Katherine
Jayaram, Shwetha	Juan, Wang	Kohl, Leah	Lettenmair, Anna	Lindsay, Giulia
Jem Generosa, Jachelle	Juanjuan, Yang	Kondo Iturralde, Sara Soña	Letters, Megan	Lindstrom-Crilly, Aleigha
Jenkins, Jasmine	Juarez, Elizabeth	Kong, Xiaoqin	Levenson, Catherine	Ling, Bai
Jennings, Jamie	Juárez, Brenda Adriana	Kost, Sarah	Levy, Rachel	Ling, Wang
Jenong, Yeajin	Juengling, Todd B.	Kovalcik, Alissa	Lewis, Cari	Ling, Xia
Jeon, YuGyeong	Jun, Sungsoo	Krauss, Katherine	Li, Qingyao	Ling, Yu
Jepson, Ingrid	Jung, Sumi	Kroner, Jewel A.	Li, Cheng	Ling Chiu, Chia
Jia, Liu	Jung, Yoojin	Kumawat, Sonia	Li, Hong	Lingyan, Hu
Jia, Yumei	Jung, Sooin	Kuntal, Bhavana	Li, Jiao	LinHui , Zheng (Lynn)
Jiahui, Zhong	Junjie, Li	Kuppusamy, Nirmala	Li, Jiaqi	Linlin, Kang
Jialin, Xu	Kabat, Katie	Kuznetsova, Nina	Li, Jiayi	Lippert, Lacy
Jian, Li	Kaiyun, Chen	Kwok, Sin Man	Li, Li	Lipscombe, Albert
Jiang, Di	Kaliappan, Umadevi	Lachkey, Christine R.	Li, Ange	Liqin, Zhang
Jiang, Ge	Kallicragas, Jack	Lagda Lansang, Dorina	Li, Jiaojiao	Liqiong, Wang
Jiang, Manman	Kamal Alshaweesh, Heba	Lahiri, Sudipa	Li, Nan	Lirong, Huang
Jiang, Yuanyuan	Kambara, Akari	Lai , Pei-Yu	Li, Nuo	Lisinski, Doriana G.
Jiang, Yingxian	Kane, Amanda	Lai Yan, Chan	Li, Xuejun	Liting, Wei
Jiang, YuanYuan	Karnik, Courtney	Lakhal, Khaoula	Li, Yujie	Litts, Sharon
Jianhong, Zhou	Kato, Mariko	Lakhani, Sahar	Li, Zijian	Liu, Chia-Yin
Jianwei, Tian	Katragini, Laura	Lalwani, Munira	Li, Mei	Liu, Jing
Jiao, Wang	Katumalla, Megan	Lam, Chengmei	Li, Meiqi	Liu, Jinyu

ADULT LEARNER GRADUATES

Liu, Ling	Luchi-Ribeiro, Lucianna	Massiani, Carmen L.	Messett, Joel	Moore, Jessica
Liu, Ga	Luo, Ruimin	Mastrotta, Emily	Metilly, Miriam Rose	Moore, Shantel
Liu, Hui	Luo, Yanwenbo	Mata, Alondra	Metz, Alicia	Mora García, Migdalia M.
Liu, Huihua	Luo, Yin	Matos Rivera, Yarimar	Metzler, Heidi	Moraes Oliveira, Erica
Liu, Jinglin	Luo, Youmei	Maynard, Emily	Metzler, Shayla	Morales Rodríguez, Iván Alberto
Liu, Mengyue	Luping, Lai	Mayo, Algira	Meyer, Emma R.	Morgan, Lauren Michelle
Liu, Qiong	Luping, Li	Mayorga Covarrubias, Felipa	Meyer, Katrina	Morris, Emely
Liu, Tingting	Luzon de Dorrell, Glenia	Mazariegos, Lizette	Meza, Laura	Morris-Canales, Terri
Liu, Xiaona	Ly, Michelle	Mazurska-Piascik, Agnieszka	Miao, Ningning	Morse, Emily
Liu, Xin	Lynn, Cailyn E.	Mazzeo, Rachel	Michenfelder, Stefanie	Moschella, Hailey
Liu, Ying	Lyons-Baral, Jocelyn	Mbadiwe, Jane	Middendorf, Andrea Gayle	Moss, Cora Susan
Liu, Shusha	Ma, Jiayu	McAllister, Andrea	Mie Suzuki, Robyn	Motta, Kezia
Liu, Szu-Yu	Ma, Shasha	McAnary, Julia A	Mihai, Marinela	Mou, Xingxing
Liu, Wenqian	Ma, Wei	McCleary, Misty	Mikhail, Jessica Elizabeth	Moxi, Yu
Liu, XiaoLin	Ma, Zhiwen	McCormick, Megan	Milagro Marcial, María	Mozaffari, Ava
Liu, Ximei	Macabinquill, Margie T.	McFarland, Galyna	Milante, Sharmen	Msheda, Alice
Liu, Ximei	Macauda Eberle, Florencia	McFarlane, Scott	Milesko, Yvonne	Muller Ortiz, Edgardo
Liu, Xinru	MacDuffie, Allison Ann	McGinley, Sharon	Milette, Mary Jane	Munger, Noah
Liu, Yating	Mackenzie Duncan, Marilyn	McGinnis, Annelisa	Milks, Samantha	Muniz, Yajaira
Liu, Ying	Madden, Brandy Michelle	McGrath, Mary	Miller, Ashley	Munoa Lahera, Georgina
Liu, Yinling	Maes, Dolores	McGrath Burczyk, Taylor	Miller, Brittany	Murphy, Ashli
Liu, Yizhou	Maharmeh, Islam	McHugh, Robin	Miller, Emily	Murphy, Carlee
Liu, Yun-Shan	Mahay, Shikha	McKenney, Carli	Miller, Jasmine Kiara	Murray, Caitlin Ann
Liu, Yuping	Mahri, Sakinah	McKinney, Keily	Miller, Jennifer	Murray, Wendy Marie
Liu, Zengxijue	Maisano, Adriana	McLaughlin, Katherine-Kelly	Miller, Kyra Storm	Murshed, Mohsina
Liu , Yang	Makula, Jessica	McLinden, Reina	Miller, Megan	Murugan, Leeladevi
Liu , Yuping	Malila, Dorah	McMullen, Yu	Miller, Rasha	Mushran, Renuka
Liu , Juan	Malin, Rebecca	McPhee, Sarah	Millsap, Eva L.	Musser, Kaitlyn
Liuyan, Huang	Mamatsashvili, Dariko	Medel Vidal, Marisol Ambar	Milwicki, Katherine	Mustafa, Mariam
Liyuan, Zheng	MAN, Suet-Yu	Medina, Alondra	Min, Wang	Mustafic, Mirela
Liyuan, Dong	Man , Chen (Felicity)	Medina, Dayrin	Min, Wang	Myers, Cheyenne
Lizardo, Dominick Alexander	Man Joyce, Li Chui	Medina, Gloria	Min, Yang	Myftija, Mirsada
Llerena, Jeannette Maria	Manassra, Anab	Medina Marquis, Yessenia	Min, Zhang	Na, Haejung
LoCicero, Ekaterina	Mane, Leena	Medrano, Tara	Mingchun, Wang	Na, Li
Lockmiller, Alexis	Manganaro, Christopher	Meili, Zhou	Mingjie, Liu	Na, Wang
Loes, Rashidah	Manickam, Anitha	Meiqin, Wei	Minglian, Wang	Na, Wu
Loewen, Roberta	Mankollari, Erbora	Mejia, Dayan	Mingqiong, Zhong	Na, Xian
Long, An	Mao, Xiting	Mejia M., Gilma E.	Minqiong, Liu	Nacey, Cristina
Longtao, Zhou	Margarita Mata, Marishell	Mejia Patino, Juliana	Mirui, Zhang	Nadeau, Burgandy
Longzhen, Hu	Marie Kalaw, Gabrielle	Mele Aruthoottayil, Sreechithra	Mirza, Sahdia	Nadim Nayji, Farida
Lopez, Alexis	Marinelli, Erika L	Melendez, Luisetly M	Mishakhina, Polina	Nagra, Seena
Lopez, Alondra	Marino, Megan	Melendez, Michelle M	Mitchell, Heather	Nampralo, Nantiyapon
Lopez, Gracie	Markland, Chloe M.	Meléndez Cartagena, María C.	Mitra, Priyadarshini	Nanan, Cindy
Lopez, Nathaly	Marr, Katherine	Meléndez Mercado, Joseline	Mitra, Priyadarshini	Napier, Miranda
Lopez, Sara	Marrapu, Revathi	Mendez, Rosalina	Mitzman, Jayde	Narain, Paula P.
Lopez, Thalia	Marrone, Ashley	Mendez Mandujano, Jennifer	Mixon, Khaila	Narayan, Radhika
Lopez Bončina, Noelia Jacqueline	Martell, Amy	Mendiola, Cecille	Miyashita, Yoko	Narciso, Deysi
López Figueroa, Jessnerie	Martin, Abigail	Mendoza, Edith	Mo, Urim	Naresh, Aarti
LoPresti Brook, Mary Ellen	Martin Barrozo, Renz	Menezes C. de Oliveira, Aline	Mo, Yunfeng	Nassi, Jennifer
Lorelle Benvegna, Kim	Martin White, Christopher	Meng, Liu	Moen, Julia	Natal Pérez, Suleyka
Lorenceau Lemoine, Agathe	Martine Longchamp, Marguerite	Meng, Yanxin	Mohan Gandhi, Sathyavathy	Naushad Noorani, Sofia
Louis, Morgan Lee	Martinez, Caridad	Mengbin, Luo	Mohd Jaber, Noura	Navarro, Elida P.
Love, Joseph	Martinez, Destiny	Menghan, Wang	Mohsain, Horaa	Ndandoh, Pamela
Lovell, Nicole M.	Martinez, Elizabeth	Mengna, Yao	Molano, Maria Fernanda	Nechuta, Pavel
Lu, Yutong	Martinez, Maria	Mengran, Xue	Molina Santiago, Cristal D.	Negrón Alemán, Tatiana
Lu, Li	Martinez, Marta	Mengyao, Zheng	Moll, Lynnea	Nelson, Ellen
Lu, Linna	Martínez, Susana	Mengying, Ji	Moller, Elizabeth	Nesa, Damaris
Lu, Linna	Martínez Gallardo, Mariana	Menjivar, Roxana	Montanez, Kathya	Nevad, Abby Lynn
Lu, Liu	Martínez Muñoz, Josué	Mercedes, Natali	Montes, Emily	Nevad, Catherine
Lu, Sunan	Martínez Ortiz, Kiaralyz	Merchant, Amynah	Montes, Socorro	Newcomb-Moore, Erin E.
Lu, Yang	Martins, Laucimara	Mergl, Lindsey	Montiel Peñalver, Silvia	Newsom, Patrick Michael
Lu, Yingjing	Martins De Souza, Monica	Merino, Karen	Moody, Janet	Nguyen, Khoi Ngan
Lu, Yingying	Martuza, Kathleen	Merrill, Daejah L.	Moore, Abigail	Nguyen, Trang
Lu, Zhang	Marvin, Samantha	Merrill, Deborah A.	Moore, Brittany	Nguyen, Yvonne
Lucero, Rayven	Mason, Elizabeth	Messerli, Mitchell	Moore, Hannah Marie	Nhey, Sambo

Niaz, Sameem	Padron, Airelys	Peterson, Maria	Qutab, Kazim	Rodriguez, Sandra
Nicholl, Camila	Page, Amy	Petrinovich, Breck	Radzki, Magdalena	Rodriguez, Stephanie
Nicholson, Maria	Page, Samantha A.	Pettit, Shannon Nicole	Raese, Isabel Kathleen	Rodriguez, Vanessa
Nieves, Violeta	Palacios Martinez, Arisandy	Phianwatthanaphon, Thitanun	Rahman, Najiah	Rodríguez Cortés, Liza Marie
Nieves Vargas, Jaelinne	Palermo, Luciana	Phuong, Luu Thi Hue	Rahravani, Nasim	Rodríguez González, María F.
Niles, Marissa	Palomer Music, Valentina	Phuong Thao, Nguyen	Rainaldi, Theresa	Rodríguez Rivera, Raquel Inés
Ning, Zhang	Pan, Yilan	Pickarski, Julia	Ramadorai, Kari	Rodríguez Vargas, Saymara
Nishimoto, Hana	Pan, XiaoRong	Pickett, Kate E.	Ramamoorthy, Ramya	Rodríguez Vázquez, Margarita
Noe, Yujin	Pande, Jui	Pierce, Micaela	Ramirez, April L.	Roes, Ariel
Noel, Jazemine	Panpan, Lin	Pimentel, Laura	Ramirez, Carolina Abdala Miranda	Rojas Pereira, Liza Mercedes
Noll, Michelle C.	Paquera, Lyka May T.	Ping, Xie	Ramirez, Kaitlyn	Roji, Ninette
Nordgren, Chloe	Paquette, Katherine	Pinto, Sarah	Ramos, Ivette	Roldan-Rodriguez, Evelyn
Nordquist, Victoria	Park, Boram	Piperdi, Ifrah	Ramos, Mariella	Rolon, Rosa
Noriko Okamura, Stephanie	Park, GaYoung	Pitten, Michelle	Ramos, Nicole	Román Aponte, Haylis I.
Normile, Elaina	Park, Jinhee	Pizarro, Maria Virginia	Ramos, Yina	Romero, Maria
Norton, Jodi	Park, NaHyeon	Po MOK, Ka	Ramos Clamont Villarreal, Daniela	Rong, Chen
Noshin, Maisha	Park, Chobin	Podolny, Gretchen L.	Ran, Junju	Rong, Yang
Novoa Flores, Jakeline	Park, Jinju	Polanco, Gigi	Rana, Anu	Rongrong, Luo
Nowrose, Tania	Park, Yijeong	Porcinai, Fabrizio	Rangel, Angela N.	Rosado, Clemencia E.
Nuckols, Madalyn	Parker, Jessica	Portillo, Kathryn Anne	Reed, Kyaula	Rosales, Coral Stephanie
Nuzzi, Margret-Ann	Parker, Rhonda	Portunato, Fernanda	Reeder, Autumn	Rose, Hollie
O'Boyle, Nicola	Parks, Kara	Poses, Veronica	Regado, Imelda	Rose, Lilee Reshard
Ocaña, Celeste Francesca	Parra, Olivia E.	Postell, Monica	Rehmani, Shaista	Ross, Alyssa
O'Connor, Emily	Parra, Yudy	Potter, Helen	Reid, Olivia	Rossler, Caroline
Oden, Rini	Parrilla Garcia, Isabel A.	Porrini, Angela	Reimer, Cynthia	Rowe, Ja'Shai
Odhiambo, Rose	Parrish, Justin	Powell, Nicole E.	Ren, Xudan	Rueda Rodriguez, Yuliana
O'Donnell, Payton	Pasarell Colón, Michelle	Power, Jennifer	Renaud, Samantha	Ruffin, Angelina
O'Grady, Michaela	Paslay, Pamela	Pratt, Sarah Amanda	Reno, Joshua	Ruffin, Kera
Oh, Hyunjung	Pateau, Lauren	Praul, Christie Ann	Renying, Yan	Rui, Zhao
Oh, YeJin	Patil, Namrata	Preciado, Jennifer	Resto de Jesús, Myriam Ivelisse	Ruiui, Jiang
O'Hanlon, Jenessa	Patino, Camila	Prevedello, Jessica	Reyes Álvarez, Iveyolanie	Ruiwen, Du
Okusawa, Yuko	Patraca Rosas, Ana Patricia	Priem, Kaitlin Elizabeth	Reynaud, Kayla	Ruixia, Yan
Olafsen Dahl, Gry	Pattabhiraman, Jayajanani	Primas, Altagracia	Reynoso, Sara	Ruixiang, Liu
Olivares Martínez, Matías Ignacio	Patterson, Jasmine	Prince, Kaitlyn	Ri, Chang	Ruixue, Yu
Olivero, Cesarina	Patton, Autumn LaRaine	Prodan, Marina	Richardson, Alana	Ruiz, Kaci
Olkowski, Elizabeth	Paullin, Megumi	Prudencio, Katherine	Richins, Ross	Ruiz, Sakayla Niquel
Omari, Elias	Pavlová, Lenka	Pu, Mikhaelah	Riddle, Miranda	Russick, Patricia
Oppenheim, Shaina	Pawley, Lisa Rebecca	Puente, Lorenza	Riggs Barton, Karin	Ruyi, Xu
Orford, Caroline	Paz Ceron, Ana Maria	Punt, Meghan	Rios, Carmen	Ryggs, Angela
Orke, Rachel	Pearce, Meghan	Punzalan-Sotelo, Aubrey M.	Ríos Berríos, Katiría I.	Saadvandi, Andrea
Örs, Balsu	Peck, Madelyn	Puryear, Mykah A.	Riquelme, Marianela	Saavedra Reyes, Deisy
Ortega Ramos, Julibel	Pederson, Olivia	Putvin, Luke	Risi, Kailee	Sabido Newberry, Rechil
Ortega Sierra, Hecmarie	Peerubandi, Sandya	Qayyum, Zarnab	Rivera, Claudia P.	Sabzwari, Iram
Ortiz, Dannielle E.	Pegoretti Medina, Raquel	Qi, Yan	Rivera Alejandro, Ana M.	Sáez Alicea, Jennifer Y.
Ortiz Berríos, Gladynette	Peipei, He	Qi Dan, Zhang	Rivera Centeno, Nellie	Sahir, Kenza
Ortiz Díaz, Emely A.	Pei-Xuan, Wei	Qianhui, Liao	Rivera Colón, Ileana M.	Saint Clair, Gisele
Ortiz Laureano, Rosa E.	Pellegrin, Gretchen	Qianwen, Xie	Rivera Maldonado, Suleida	Sakaguchi Dib, Lilian Mayumi
Ortiz Santaella, Roxangiely L.	Pellett, Allyson	Qiaoqing, Wu	Rivera Pérez, Jirayna	Salam, Mobina
Osborne, Sha-Shanna	Peluso, Dawn-Marie	Qiaoying, Yang	Rivera Rivera, Luzmarie	Sale, Taylor
Osman, Amal	Pelzman, Michele	Qin, Xiaomin	Rivera Rivera, Mari Carmen	Salib Vázquez, Jaysie
Osorio, Adriana G	Pena, Abigail	Qin, Xiaoyan	Riz , Lawrence Viray	Salinas, Nadia
Osorio Lemus, Leidy Vanessa	Pena, Andrea	Qing, Shen	Riz , Lawrence Viray	Salinas Baires, Karla
Osuna, Francelys	Penglai, Fang	Qing, Sun	Rizwan, Farheen	Salomon, Hala
Otero, Cynthia	Pereira da Costa, Sandra Elizabeth	Qing, Zhang	Robertson, Jennifer	Samonte , Shiela Mae
Ou, Sujun	Peremetna, Yana	Qiu, Lina	Rocca, Raven Alexa	Samuel, Tamera
Ouachani, Khadija	Perez, Elitsay	Qiuling, Zhong	Rocio Gonzalez Gomez, Silvia	San Elias Sierra, Elizabeth
Ovard, Rachel	Perez, Ithzel	Qiuting, Qin	Roddy, Caroline	Sanchez, Katherine
Ovesen, Melinda	Perez, Melissa	Qiwen, Xie	Rodriguez Costa, Stephanie	Sanchez, Zuleyma
Owens, Benjamin Robert	Perez, Stephanie	Quesada Casillas, Aura M.	Rodriguez, Amelia	Sanchez Fogarty Peralta, Claudia
Owens, Gina	Perez, Yolocitzilali	Quevedo, Kelsey	Rodriguez, Brenda Y	Sánchez Ortiz, Marilitza
Oyiwoha Okwa, Geraldine	Pérez, Daniela	Quiñes Valentin, Katiría E.	Rodriguez, Jessica	Sanchez Pineda, Laura Ximena
Ozsoy, Duygu	Perez Rocha, Genesis Stephanie	Quillec, Sophia	Rodriguez, Julianna	Sandalova, Kristina
Pacaigne, Joyance	Pérez Valle, Roselyn Marie	Quiñonez Benitez, Carolina	Rodriguez, Ludwicka	Santamaria, Diana
Padilla Matos, Coral	Perry, Stephen C.	Quintana, Haley	Rodriguez, Miguel Angel	Santana, Desiree
Padín Reillo, Ruth Daniely	Pesqueira Ortiz, Militza Arlene	Quintanilla de Reyes, Rocio	Rodriguez, Rosana	Santiago, Yelitza

ADULT LEARNER GRADUATES

Santiago Feliciano, Angely Enid	Shay, Jennifer	Sowmya Thatha, Venkata Lakshmi	Tansel, Willow Grace	Troksa, Mariebhez
Santiago Santiago, Ashley	Sheets, Cari	Spagnuolo, Maria Valeria	Tapia, Andrea Fernanda	Trone, Tammy
Santiago Santiago, Marixa	Sheftall Donovan, Katherine	Spampinato, Emilee	Tarazona, Karla	Truhn, Gwen K.
Santos, Francis Elena	Sheikh, Nabila	Sparks, D'Ann	Tatum, Devon	Tubbs, Evangeline
Sapienza, Jacob	Shekaran, Nikila Aislinn	Sparrowgrove, Sarah-Lynn	Taylor, Drew	Tufariello, Dominique
Sara, Shin	Shelite, Raelynn	Spear, Annie Laurie	Taylor, Julianna R.	Turkaly, Jennifer D.
Saravana Kumar, Annu Radha	Shen, Hannah	Spooner, Hannah Svetlana	Teixeira, Anna Carolina	Turmon, Megan
Sardariani, Melanie	Sheng, Jing Jing	Sposato, Erin	Teller, Elizabeth	Turnbaugh, Shanon
Sarmiento, Carly	Shenghan, Yue	Sprunger, Braelynne	Tenorio, Monica Katherine	Udaquiola, María
Sasaki, Akihito	Sheridan, Yoli Ashly	Sprunger, Braelynne	Terasaki, Tomoko	Udud, Mariya
Sato, Harumi	Sherman, Miranda	St Onge, Elizabeth Noel	Teresi, Laura	Ulusoy, Asli
Satogata, Kanisha	Sherr, Emma Rose	St. Jean, Marie	Terry, Walter F.	Urrego Manjarres, Paula Alejandra
Savage, Jane J.	Shi, Lihua	Stadthagen, Maria Isabel	Terry-Jordan, Delilah	Ursic De Tejerina, Maria Jocelyn
Savoie, Casey	Shihua, Wu	Stallings, Sandra	Thi Ha, Doan	Ury, Jonah
Sawyer Brandvold, Amalie	Shihui, Kong	Stauffer, Kira	Thi Hoa, Do	Usher, Hillary
Scarberry, Danielle	Shiozawa, Kimie	Steadman, Melanie	Thi Huyen Tram, Nguyen	Vahdat, Vida
Schaier, Chaya	Shorts, Gienel	Steakley, Teresa M.	Thi Loan, Nguyen	Vaishya, Rachna
Schatz, Caitlin E.	Shuang, Xia	Steele, Jennifer	Thi Ngoc Quyen, Dang	Valdes, Kayla M.
Schauder, Jenna	Shuangfei, Shi	Stevens, Lisa	Thi Nhan, Dang	Valencia, Diana
Scheer, Melanie	Shudan, Chen	Stewart, Rebecca	Thi Thu, Pham	Valente, Karole
Schiffman, Kate	Shujiao, Wang	Stewart, Salena	Thomas, Kamaria Lauren	Valenzuela Obando, Derly Carolina
Schlousky, Kaleigh	Shuman, Megan	Stewart, Sarah	Thomas, Sharon	Valero, Josellyn
Schlachter, Ashley	Shumate, Sarah	Stewart DeLoach, Caroline	Thompson, Alyssa	Van Den Berg, Dawn
Schley, Alisha	Shuyi, Jin	Storti, Bryan	Thompson, Emily	Van Horn, Bianca
Schneider, Megan	Shweta, Saharan	Stratton Shelden, Eve	Thompson, Julianne	Varagan, Srirenganayaki Lakshmi
Schnereger, Michelle	Sievers, Daina	Straub, Courtney	Thompson, Stephanie	Vargas, Jennifer
Schoelles, Kate	Sifford, Aisshe	Stulic, Ana	Thompson Anderson, Joann R.	Vargas Cevallos, Mireya Alfonzina
Schrimpf, Stephanie	Sii, Shin	Su, Yuechan	Tian, Hong	Vazquez de Garcia, Laura
Schrock, Courtney	Silva, Maria	Su, Min	Tichenor, Diane	Veerani, Reshma
Schrull, Megan	Silva Santiago, Monica	Su, Yanmei	Timode, Shin	Vega Navarro, Sonestchka Y.
Schulert, Maya	Silverberg, Emily	Suarez, Annabella	Ting, Li	Vega Soto, Gustavo
Schult, Emily	Simmons, Lane	Suarez, Izabella Lara	Ting, Liu	Vela, Claudia
Schulz Guerrero, Daniela	Simon, Graham	Subramanian, Suganya	Ting Huang, Yu	Velasquez, Andrea
Scott, Kelly K.	Simon, William	Suchankova, Michaela	Tingchen, Chang	Velasquez, Jessica Sophia
Sebez, Djuka	Simons, Ashley Marie	Sudan, Sujata	Tingting, Deng	Velavan, Prabhavani
Seewald, John Charles	Simpson, Anna	Sudrajat, Ariane Viky	TingTing, Wang	Ventura, Laura
Sefchick, Kim	Singh, Renu	Suhyun, Shin	Tingting, Wang	Ventura, Natalie
Seint Seint Szan, Su	Singh, Shikha	Suihua, Zhan	Tingting, Zhu	Ventura-Mola, Maribel
Seiple, Rachel	Singletary, Madeline	Sujeung Spatz, Emilie	Tinsley, Lillian	Vera, Marlen
Selman, Whitney	Sinlu, Feba	Sullivan, Alissa Anne	Tobias, Leila	Verastegui, Esmeralda
Selnekovic- Lee, Julie	Sirbardash, Madeline Christine	Suman, Nidhi	Tolbert, Savannah Ashlee	Vergara Trinidad, Roselyn
Senatus, Taylor	Široká, Hana	Sun, Xueping	Tolson, Mere	Vicaruddin, Nausheen
Seo, HaeYoung	Sixia, Zou	Sunagawa, Emiko	Tomlinson, Lily	Vidaurre Valdez, Maricruz
Sepulveda, Anthoneth	Sixun, He	Suresh, Kavitha	Toney, Alyssa	Vieira, Gabriela
Serrano, Amanda	Skinner, Heather B	Surkan, Brian	Tong, Zhou	Viele, Adina R.
Set, Myo	Skinner, Sarah	Susarla, Madhuri	Tongtong, Wang	Viet Tran, Huong
Seward, Cori	Skodnek, Claire Catherine Angèle	Suter, Celeste D.	Tonkin, Shelby Jean	Villacorta, Leslie
Shaban Moha Zafan, Shrouq	Slayter, Lillian	Svačinková, Lucie	Toole, Allison	Villada, Merelin
Shackleton, Matthew	Smith, Amanda	Svensden, Julia C.	Toro, Jacqueline	Villalvazo Gamboa, Camila
Shaheen, Fnu	Smith, Breana	Swann, Mary	Torres, Damaris	Villalvazo Gamboa, Emely
Shakerardakani, Nasrin	Smith, Brittany	Syed, Shumaila	Torres Estrada, Zioani	Villamor, Tanya
Shaklee, Lisa Wetherell	Smith, Brittany	Sylstad, Cynthia	Torres Martín, Valeria Y.	Villarreal, Laura
Shalai, Sayiba	Snider, Melissa	Syuan Wu, Yi	Torres Vera, Julyvette	Villarreal, Patricia
Shan, Wen	Snype, Courtney Aislynn	Sze Koo, Mei	Tou Hao Ian, Si	Villegas, Larissa
Shannon, Jacqueline	So, Katherine	Tabatsko, Joy	Tou Hao Pui, Si	Virtic, Brindusa
Shanshan, Ma	Sober, Emily	Tabor, Shawnaly	Tran, Christopher	Viruthagiri, Umamaheswari
Shanshan, Zhan	Sol Algeri, Maria	Takagi, Mari	Tran, Nguyet Minh	Vitale-Eldridge, Savannah T.
Shao, Liming	Soledad Correa, Maria	Talley, Lauren	Tran, Thu Nguyet	Vitti Karpinski, Nathalie
Shao, Yang	Solis, Carmen	Tamburello, Nancy	Tran, Thuy Nga	Vogrič, Karin
Shaoqun, Wang	Solonzano, Jamie	Tan, Laura	Trần, Uyen-Nguyen	Volz, William
Sharafaddin-Zadeh, Nikta	Song, Limin	Tan, Marianne	Trần Bảo Thư, Nguyễn	Von Berg, Jennifer
Sharma, Rachna	Song, Nadia	Tang, Lisa	Tremolini, Jessica Lynne	Vrtiskova, Martina
Sharma, Vishwapriya	Song, Xianglei	Tang, Piao	Treviño, Cassandra Ashley	Walczak, Bartłomiej
Shasha, Li	Soubrie, Belen	Tang, Shun	Trigilio, Kathleen	Wali Eddine, Diana
Shaw, Garima	Souliere, Vanessa	Tang, Shuting	Trinh, Linh Thi Thuy	Walker, Angelique

Walker, Cheyanne	Wendt, Jennifer	Xiaoqi, Zhong	Yanyan, Zheng	Zaidi, Farzana
Walker, Samantha	Wen'er, Shi	Xiaoqian, Wang	Yanyun, Zhai	Zambelli Navarro, Amanda
Wallace, Terri	Weng, Tou Sio	Xiaoqing, Liu	Yao, Du	Zarate, Blanca
Wallace Karpf, Suzanne	Wenjia, Xie	Xiaoqing, Zhang	Yao, Liu	Zavala, Jannet
Walsh, Audra	Wenqi, Luo	Xiaoqing , Yi (Rebecca)	Yap, Maria Theresa	Zayas, Gabriela
Walters, Lily	Wentworth, Mikayla	Xiaoyao, Guo	Yaqun, Wang	Zehnder, Adelaide
Walton, Olivia	Wenwen, Chen	Xie, Huiyan	Ye, Chujun	Zen, Hsiu-Hsien
Walton, Samantha E.	Wenyao, Zhang	Xihong, Wang	Ye, Jiaolu	Zenchuk, Alexandria A.
Wanchun, Huang	Werle, Vanessa	Xin, Liao	Yeruva, Swathi	Zha, Xiujuan
Wang, Binnen	Wesley, Chase	Xin, Qi	Yi Wu, Chih	Zhang, Miao
Wang, Enzhe	West, Aleisha	Xin, Wang	Yi xuan, Bai	Zhang, Chunyan
Wang, Huian	Westerlund, Katelyn	Xin, Yu	Yibin, Zhang	Zhang, Juan
Wang, Jiaying	Westrick, Alexander M.	Xinjuan, Qu	Yidan, Zhuang	Zhang, Junjie
Wang, Jing	White, Amanda	Xinran, Liu	Yijun, Wang	Zhang, Qixing
Wang, Jinywen	White, Dana	Xinrong, Wu	Yin Foo, Man	Zhang, Ting
Wang, Mingli	White, Denisha	Xinrui, Zou	Ying, Tian	Zhang, Xinman
Wang, Ruolan	White, Karen	Xinyu, Zhang	Ying, Wang	Zhang, Xiujuan
Wang, Ting	White, Sharona	Xiong, Yuanyu	Ying, Xu	Zhang, Ya
Wang, Weiwei	Whitley Cummings, Kaitlyn	Xiong, Chengju	Ying, Yin	Zhang, Yu
Wang, Xiaofang	Whitney, Hannah	Xiuling, Zhou	Ying Wai Mak Hee, Priscilla	Zhang, Zuping
Wang, Xiaosi	Wiggins, Jasmine	Xiuzhen, Liu	Ying Wong, Suet	Zhao, Danfeng
Wang, Xinyi	Wildman, Krystal	Xixi, Dai	Ying Wu, Xiu	Zhao, Hongtao
Wang, Xinyun	Wilkinson, Melissa	Xixi, Xie	Yingran, Wu	Zhao, Lili
Wang, Xueting	Wilkinson, Tarntida	Xiyan, Xie	Yingying, Wu	Zhao, Miao
Wang, Yang	Will, Christiana	Xu, Jiehan	Yingying, Xu	Zhao, Ming
Wang, Yi Meng	Williams, Charelyse N.	Xu, Jinhui	Yokota, Tomoe	Zhao, Wanting
Wang, Yi	Williams, Rebecca Marie	Xu, Lan	Yomabut, Nawarat	Zhao, Yabo
Wang, Yixuan	Williamson, Kelly	Xu, Qing	Yoon, Jeongwon	Zhaoling, Sun
Wang, Yixuan	Williamson, Kelly	Xu, Wenfang	You, Dale	Zheng, Jingwen
Wang, Yu	Williams-Searle, Chloë	Xuan, Guo	You, Dale	Zheng, Jueying
Wang, Yuchen	Willis, Amani	Xuan Lin , Yi	Youb, Yamina	Zheng, Nana
Wang, Yue	Wills, Sabine	Xuanyu, Guo	Young, Cari Elizabeth	Zheng, Xiaoli
Wang, Zhuqin	Wilson, Anna Victoria	Xue, Jiang	Young, MaKayla	Zheng, Yeran
Wanqing, Sun	Wilson, Brandon	Xue, Minyi	Yount, Allena	Zhenzhen, Wang
Ward, Aimee	Winston, Briana	XueLian, Hu	Yourman, Christi	Zhihui, Tang
Ward, Susan	Wong, Mui	Xuelin, Yang	Yu, Hongyan	Zhiyi, Zhou
Wardman, Thomas	Woo, Mia Mayling	Xuelin, Yang	Yu, Hongying	Zhiyi, Zhang (Tansy)
Warnakula Fernando, Loyala	Woods, Brittny	Xueyin, Ding	Yu, Sun	Zhiyuan Jiang, Carrie
Warner, Kellen	Wu, Fei	Xuezhen, Han	Yu, Zhuo	Zhong, Bingjiao
Warner, Kristin	Wu, Tingting	Xuezhuayu, Han	Yu Boisjolie, Ariel	Zhongyue, Hu
Watson, Christa	Wu, Tong	Y Villalobos, Virginia	Yu Han, Fung	Zhou, Hange
Watson, Hannah	Wuersching, Annette	Yahya Eshaq, Lamia	Yu Templeton, Qinlei	Zhou, Juan
Watson, Skylee	Wyatt, Ginger	Yajayra Rivas, Vicky	Yuan, Mengqing	Zhou, Ya
We, Bee Yee (Eunice)	Wynne, Lindsay	Yamamoto, Bethany	Yuan, Tian	Zhou, Yang
Weber, Rachel	Xi, Li	Yan, Han	Yuanyuan, Wang	Zhou, Yun
Wei, Guo	Xia, Tan Wen	Yan, Jingyi	Yuanyuan, Zhu	Zhu, Chunyan
Wei, Jin	Xia, Wu	Yan, Wang	Yue, Yi	Zhu, Jie
Wei, Qing	Xia, Yu	Yan, Xin	Yue, Zhang	Zhu, Saijie
Wei, Yu-Chieh	Xia, Yuxuan	Yanan, Ma	Yujie, Xu	Zhu, Weina
Wei Ying, Kang	Xian, Lu	Yang, Bingqing	Yujuan, Dai	Zhu, Xinxin
Weifeng, Tian	Xianjing, Guo	Yang, DoKyung	Yujuan, Lan	Zhu, Yini
Weigel, Christina	Xianzhen, Yu	Yang, Fangfang	Yujuan, Shao	Zhudan, Xu
Weirong, Wang	Xiao, Lidan	Yang, Lifu	Yuk, Wan Ming	Ziegler, Kate
Weiyun, Chen	Xiaofeng, Tang	Yang, Liu	Yumeng, Ma	Zifen, Fan
Wellman, Haleigh Rian Dawn	Xiaogai, Ai	Yang, Liuya	Yun Chang, Hsuan	Zijiao, Yuan
Wells, Brittany	Xiaohong, Yan	Yang, Pan	Yunyun, Liu	Ziling, Zheng
Wells, Brittany	Xiaohong, Yan	Yang, Yan	Yunyun, Zeng	Zixin, Huang
Wells, Jonathan	Xiaohui, Chen	Yang, Yuting	Yuqi, Shi	Ziyang, Song
Wen, Junli	Xiaohui, Lu	Yang, Zhang	Yuqing, Zhang	Ziyang, Yang
Wen, Li	Xiaojuan, Ouyang	Yang, Zhumei	Yusefi, Raheleh	Zogu, Ilirjana
Wen, Wen	Xiaojuan, Xu	Yangqiu, Liu	Yuting, Zhao	Zou, Juan
Wen, Zhao	Xiaoli, Gan	Yanjun, Liu	Yuwei, Zhou	Zouheir, Huda
Wen Ye, Xu	Xiaolin, Wang	Yanli, Cao	Yuyi, Zheng	Zuniga Aguirre, Noemi
Wencong, Lu	Xiaoling, Zhou	Yant, Samantha	Zabawa, Theresa	
Wendell, Carey Kaia	Xiaomei, Lang	Yant, Samantha	Zahoor, Gazallah	



211 E 43rd St., 7th Fl #262
New York, NY 10017

P: 212-358-1250 F: 212-358-1256
amshq.org

Mission, Vision, Values

AMS Board of Directors

AMS is grateful to all Board Directors for their enduring guidance, dedication, and generosity.

2024-2025

EXECUTIVE COMMITTEE DIRECTORS

Anita Hanks, *President*
Geoffrey Bishop, *Vice President*
Robyn Breiman, *Secretary*
Debbie Senoff-Langford, *Treasurer*
Laura Saylor, *Member-at-Large*
Munir Shivji, *Executive Director*

BOARD MEMBER DIRECTORS

Gulzar Babool, *Chair of the Teacher Education Action Commission*
Sabrina Binkley
Margarita Diaz
Saloni Mathur, *Chair of the Regional Action Commission*
Michelle Morrison
Mary Beth Ricks
Michelle Seyller, *Chair of the School Accreditation Commission*

2026-2027

EXECUTIVE COMMITTEE DIRECTORS

Anita Hanks, *President*
Michelle Seyller, *Vice President*
Geoffrey Bishop, *Treasurer*
Robyn Breiman, *Secretary*
Laura Saylor, *Member-at-Large*
Munir Shivji, *Executive Director*

BOARD MEMBER DIRECTORS

Gulzar Babool, *Chair of the Teacher Education Action Commission*
Sabrina Binkley
Margarita Diaz
Mary Beth Ricks



AMS Mission, Vision, and Values

During the July 2025 Board meeting, the American Montessori Society Board of Directors took a bold step forward in shaping the future of Montessori education. As part of the development process for Strategic Plan 2030, we formally adopted newly revised Mission, Vision, and Values statements.

This milestone goes beyond just words on paper—it reflects deep introspection, meaningful dialogue, and a shared commitment to ensure our guiding philosophy accurately represents who we are and where we are headed. These statements will serve as our compass, guiding decisions, inspiring action, and aligning us with the needs of our community and the changing world around us.

Mission: To provide leadership, standards, and resources to advance Montessori as a research-validated, enduring model for education.

Vision: Equitable access to high-quality education for children worldwide.

Values: Community | Excellence | Innovation | Integrity | Respect